 Proud to sponsor the Yarra Valley Bonsai Society  
[www.facebook.com/BonsaiRoots2015](http://www.facebook.com/BonsaiRoots2015)

#### Quotable Quotes

*When a bonsai stops growing, you know it's dead.*  
Japanese Proverb



Proud sponsor of the Yarra Valley Bonsai Society

[www.bonsaisensation.com.au](http://www.bonsaisensation.com.au)



PO Box 345 Mount Evelyn, VIC  
3796 Australia

[www.yarravalleybonsai.org.au](http://www.yarravalleybonsai.org.au)

[info@yarravalleybonsai.org.au](mailto:info@yarravalleybonsai.org.au)

Reg. Assoc A0052264P

Pres: Geoff P 0430 130 955

Vice-Pres: Rudi J 0418 369 852

Sec: Lindsay H 0403 800 671

Treas: Julie H 0419 870 240

Marktg: Marlene J 0418 369 852

The YVBS meets on the **second Tuesday** of each month now at **Cire Services** (Formerly Upper Yarra Community House or Morrison House)

Old Hereford Road,  
Mount Evelyn



Meetings begin at 7:30pm.

**Saturday Workshops** are 1-4:30pm on the **Last Saturday** of the month, at the same venue as monthlies!

### Inside this issue:

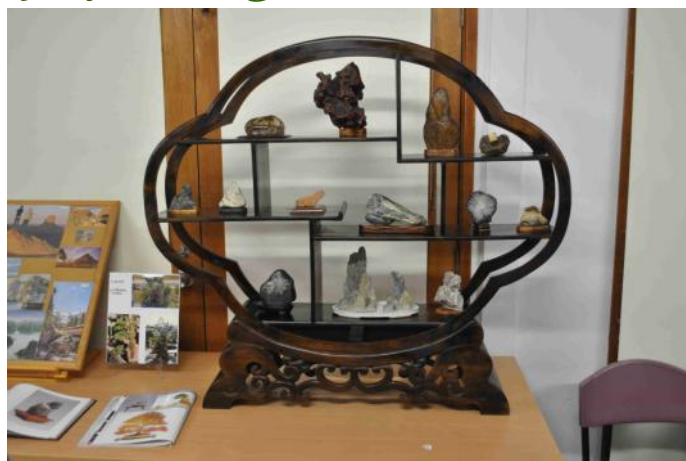
Trade & Lib Update	2
Universal Penjing Conference	2
Intermediate Workshops	2
Visit to David's Place	2
Member Profile	3
Nursery Crawl	3
Mr Miyagi	3
AABC Convention	4
AGM	4
Saturday Workshops	4
Tree Profile - Ash	5
On The Display Table	6
Bonsai Calendar	7
Looking Ahead	8
Other Events	8
YVBS Forum	8

# The Yarra Valley Bonsai Society Newsletter

## Highlights from July & August 2018

The July meeting featured a presentation by Victor B on Suiseki - Japanese viewing stones. While Victor claimed to be a fraud as he was not really an expert on Suiseki, he certainly managed to impart a lot of information and enthusiasm for the subject!

Victor displayed a number of stones brought back from his recent trip to Japan, and others locally collected. He explained that the term comes from two Japanese words or symbols - *sui* meaning water and *seki* meaning stone.



Suiseki suggests an object, and captures that object's essence in accordance with Zen teachings. It incorporates the Japanese concept of wabi sabi - in very superficial terms, where wabi means inward or spiritual and sabi means aesthetic and artistic.

Victor explained that it is nice to mix Suiseki with shohin trees in a bonsai display - although they can be displayed alone as well.

Thanks to Margaret S and David S for also bringing in and displaying elements from their excellent Suiseki collection.

The August meeting featured a Bonsai Basics presentation followed by a general workshop. Alan H with support from Trevor J demonstrated repotting techniques using a rather large ash as an example tree.

Continued Page 2



Above - Suiseki Display at the July meeting.

Below left - Alan demonstrates repotting, with assistance from Trevor.

### Calendar Dates:

- 1st September (Saturday) YVBS Nursery Crawl - 10:30am
- 8th & 9th September (Saturday & Sunday) BSV Show at Ripponlea. Elsternwick.
- 11th September (Tuesday) YVBS Monthly Meeting. 7:30pm. Cire.
- 15th September (Saturday) Satsuki Interest Group meeting. 1:30pm. Bonsai Art, Heatherton.
- 17th Sep to 20th Sep (Monday to Thursday) Universal Penjing Conference. National Arboretum, Canberra.
- 23rd & 24th September (Saturday & Sunday) Northern Suburbs Bonsai Show. Bundoora
- 29th September (Saturday) "Last Saturday of the Month" Workshop. 1:00pm. Cire.
- 9th October (Tuesday) YVBS Monthly Meeting. 7:30pm. Cire.
- 13th & 14th October (Saturday & Sunday) BSV Bonsai Exhibition. Box Hill.
- 27th October (Saturday) "Last Saturday of the Month" Workshop. 1:00pm. Cire.

See also the Events Calendar on our website: [www.yarravalleybonsai.org.au](http://www.yarravalleybonsai.org.au)

## *Highlights from July & August - Cont. From Page 1*

Alan said that growing trees in the ground or in bigger pots thickens up the trunk more rapidly - potting in bonsai pots slows down growth dramatically.

When repotting, cut back large roots heavily, leaving smaller roots and encouraging the development of desired fine roots. Always wire trees into the pot to prevent damage to root development from tree movement due to wind or animal action.

Trevor followed up Alan's work on his ash with a repotting of a large collected lilly pilli.

## *Universal Penjing Conference Canberra*

The National Arboretum in Canberra will be hosting the Universal Penjing Conference from 18th to 20th September 2018. The Conference will bring together nine international Penjing and Bonsai Masters from around the world, who will perform demonstrations as well as conduct Master classes for local penjing and bonsai enthusiasts.

Conference registration can be booked a one-day pass, a two-day pass, or full registration which includes attendance at both days and observer status at the Master classes. Master class participation is booked separately, and spaces are limited. Conference registration closes on 10th September.

For any members who have not yet visited the National Bonsai and Penjing Collection at the National Arboretum, perhaps this is an opportunity to kill two birds with the one stone?

More information on the Universal Penjing Conference may be found at: [act.gov.au/UniversalPenjing](http://act.gov.au/UniversalPenjing).

## *Bonsai Intermediate Workshops*

Tutorial Workshops with Craig Wilson will commence on Tuesday 4th September and run for 4 consecutive weeks skipping only our normal meeting night on 11th September. Venue will be Cire Services in Mt Evelyn. Bookings are essential - one or two spots may still be available. Contact Marlene if you wish to participate [mjperlitschka@iprimus.com.au](mailto:mjperlitschka@iprimus.com.au) or 0418 369 852.

Craig is a well-respected bonsai artist who has been running these workshops for a number of years, due to the demand from our members both novice and experienced. An ideal opportunity to gain advice and assistance for the development and styling of our trees.

Our normal Novice Training Course, also run by Craig, has not been scheduled this year due to lack of sufficient numbers, however will be considered again for next year. Register future interest with Marlene at any club meeting or workshop.



## *Visit to David's Japanese Garden*

In the spirit of sharing our individual bonsai journeys, our member David R has invited club members to visit his home in Warrandyte to inspect his bonsai collection and his Japanese Garden, which was inspired by his recent trip to Japan. This visit will be held on Sunday 21st October, meeting there at 12:00 noon, and David has kindly volunteered to throw on a sausage sizzle during our visit. Bring your own drinks.

This is a purely social occasion and RSVP's are essential - for the sake of security for his collection, his address will only be shared with those who register for the visit. Contact Geoff P [gpettman8@gmail.com](mailto:gpettman8@gmail.com) or 0430 130 955 to register your intention to attend.



### **Library Check-out!**

YVBS has subscribed to the local bonsai magazines produced by the AABC and Ian Glew. Copies of all issues are in the library for perusal or borrowing. Remember, the checkout period for books and other library material is one month. If you check out a book and are not able to make the next meeting, you can return the book at a workshop or even post it to the club PO Box.

### **Trade Table Cheque-out!**

The trade table has been restocked with new tools, wire and other accessories. Lorraine Simpson and other pots also in stock. Don't forget the club's tool sharpening kit, available for use at meetings. Anything else you would like to see stocked? Just advise at the trade table or to any committee member.





## Member Profile

New member Jim R was born in Yorkshire, UK but now lives locally in Mt Evelyn. He is married without children, and is retired.

Jim has no formal horticultural background apart from a keen interest in gardening, but became interested in the art of bonsai in the late 1980's. His knowledge of bonsai techniques came from a 3 day course completed at Garden World.

He claims that his bonsai collection of over 100 trees is "too large" - a familiar complaint! His favourite tree is a juniper cascade.

Jim's aim in bonsai is to continue learning, and doesn't see that this will ever finish as there is always something else to learn and master.

His other interests outside bonsai are gardening and woodturning.



## Ask Mr. Miyagi.....



**Q. Dear Mr Miyagi: What is penjing? Is it just Chinese Bonsai? I heard it in a context that made me think Penjings were all landscapes and vice-versa.**

**A: Dear Reader:** While it's true that although Japanese Bonsai tends to focus on a single tree or group of trees with the aesthetics encompassing only the trees (and to some degree the placement and compliment of pot) what we see as Penjing tends to look at the balance of the tree within an environment....thus giving us the 'landscape' stereo-type. However, remember two things: one is that just as there is no monolithic 'bonsai' in Japan, even less is there a monolithic 'penjing' in China. China itself is one of the most ethnically, linguistically and culturally diverse countries in the world and the wide array of schools of this umbrella craft reflect this. The second thing to keep in mind is that although the two countries are separated by sea, the interaction over the centuries has been massive: there is no Berlin Wall between China and Japan in the

iterations of this art form. Japanese water trays or saikei plantings seem to have more in common with middle of the road penjing than the 'Five Styles' .....and certain Chinese styles are nearly identical first-cousins to the Japanese analogues.

There are heaps of generalisations of varying accuracy when comparing the two: for example— figurines are OK in penjing, but taboo in bonsai.....bonsai (coming from an island nation which some believe tend to have more prescriptive art forms) is all about rules, whereas penjing is free-form....the pot is less important in penjing than in bonsai....lots of myths to be bashed. Nevertheless, I have read one summation which I really liked and which seems to capture the essence of the differences between the two, overlap notwithstanding: To me, the purpose of Penjing seems more concerned with creating a subtle and metaphorical tale, using trees and other landscape elements as its medium. So the tree or trees become a means to that end, rather than an end in themselves, as is more the case with Japanese bonsai.

*Members may submit questions to Mr. Miyagi c/o the YVBS web forum or per the club email: [info@yarravalleybonsai.org.au](mailto:info@yarravalleybonsai.org.au)*

## Nursery Crawl

Members are reminded that the next club Nursery Crawl is on Saturday 1st September, visiting Dinsan wholesale nursery, Bonsai Art bonsai nursery and Collectors Corner at Garden World. We also have been invited to call in to Hachinoki pottery to see how bonsai pots are hand-made, with hopefully an opportunity to purchase some. Refer to separate email for details. Meet at Hachinoki Pottery at 10:00 to 10:30 am.

This is a great opportunity to purchase some bonsai stock, starters, or "finished" product, as well as garden plants at wholesale prices at Dinsan, Melbourne's largest wholesale nursery. Should be a great day out, let's hope that the weather gods are kind to us!



*Above - members selecting trees at the previous Nursery Crawl in February.*



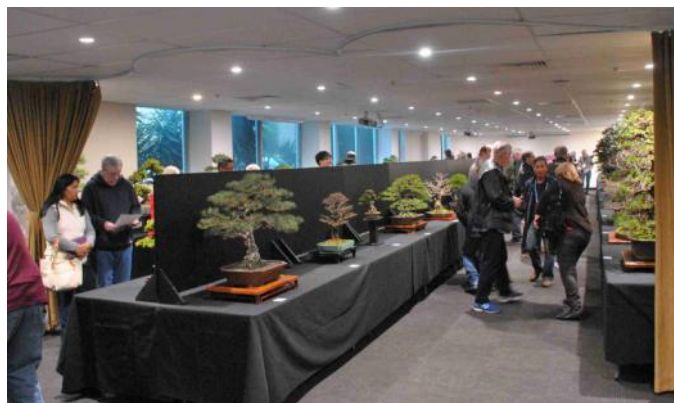
**NEW PRODUCT LINE**....for those starting out or with a handful of bonsai, I have introduced a **50/50** mix of **ORCHIATA PINE BARK** and **DIATOMITE 2-7mm** in a **20L bucket @ \$25.00**. Also available are **DIATOMITE 35L bags @ \$25.00** and **ORCHIATA PINE BARK 40L bags (3-6 or 6-9mm) @ \$30.00**. **ORCHID POTS** are available in a range of sizes. To order call Julie **0419 870 240** or email



## AABC National Convention 2018

The 2018 National AABC Bonsai Convention was held in Melbourne at the Mantra Bell City in Preston in July, and a number of YVBS members took the opportunity to attend either the Convention or the Exhibition, including Geoff P, Lindsay H, Richard J, Tom G, Margaret S, David S, Ray A, Val G, Des K, Michael S, Alison S, Tracey F, Dean S, and John G.

International headline artist was Bjorn Bjorholm from USA, who kept the audience enthralled and entertained while he styled 4 separate trees over the two day Convention. The trees were auctioned at the end of each day and fetched prices worthy of the work of such a great artist. Bjorn was ably assisted by local expert Joe Morgan-Paylor.



Michael Simonetto gave an insightful and thought-provoking presentation on "Breaking the Mould", covering an alternative way of looking at bonsai design. Hanh Tran from Baloc Bonsai gave a demonstration featuring his bending techniques for pine trees.

Congratulations must be extended to Bonsai Northwest club for staging such an excellent event.

The 2019 National Convention is also in Melbourne, organized by the Victorian Native Bonsai Club and featuring solely native trees. Don't miss it!

*Above - The great exhibition associated with the Convention*

*Left - International headline artist Bjorn Bjorholm from USA*



## Annual General Meeting

The Annual General Meeting of the Club will be held on 11th September, where a new Committee of Management will be elected. Please consider nominating for the Committee, as new ideas and assistance are always needed and welcomed. See Lindsay for a nomination form prior to the AGM.

Also, bring along the free trees given out at previous AGM's to show and compare progress made. Get a new free tree on the night, and also celebrate the Club's 10th Birthday!

## End-Of-Month Sat. Workshop

There is always something interesting to see and do at the regular Last Saturday of the Month Workshop. All members and guests are encouraged to drop in with or without their trees, to do some work on their "babies", to watch other members and learn from their activities, or just to have a chat.

Many current members had their first introduction to our club through dropping in at a Saturday workshop. Encourage your relatives, friends, colleagues or associates who have shown any interest in the art or in gardening activities in general to come along and check us out.

There is always plenty of helpful and practical advice on hand for those who need it.



*Above - Members at work at the Saturday Workshop*

## BONSAI SENSATION NURSERY

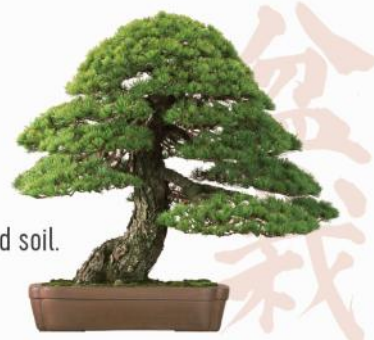
MONDAY TO FRIDAY 9:00am – 5:00pm / WEEKENDS 10:00am – 3:00pm

PHONE 8794 9668 / MOBILE 0425 722 827

253 Centre Road, Narre Warren South, VIC 3805

We have more than 30,000 plants for sale, including an extensive range of pots, tools, wire, and soil. Lessons, plant boarding, and restyling are also available.

Visit our Facebook page and website [BONSAISENSATION.COM.AU](http://BONSAISENSATION.COM.AU) for more information





## Tree Profile: Ash - *Fraxinus*

**General:** According to *Wikipedia* the **Ash**, is a genus of flowering plants in the olive and lilac family, Oleaceae. It contains 45–65 species of usually medium to large trees, mostly deciduous though a few subtropical species are evergreen. The genus is widespread across much of Europe, Asia and North America.

It is highly regarded by 'Bonsai Enthusiasts' around the world for its bark variations and some flowering species.

**Lighting & Temperature:** They're very hardy and tolerate full sun to shade and can tolerate a windy spot if watered well. Frost tolerant to -10°C!

**Watering:** Frequently, especially during hot and windy weather, reduce watering in winter.

**Feeding:** Feed every two weeks during the growing season using a high nitrogen fertiliser for young trees in training! For older trees use a low nitrogen fertiliser to prevent the leaves from getting too big! Feeding less until the end of autumn will assist in reducing the leaf size too!

**Repotting:** Best time in spring, before bud burst, every 1 - 2 years for young plants and every 4-5 years for older ones in free draining soil. Carry out root pruning up to two thirds at the same time!

**Pruning:** Structural branch pruning and shoots pinching is best carried throughout the growing season and hard pruning in winter.

Leaf pruning every second year in late spring is important to reduce the size of the large leaves. Total defoliation can be done twice per season to increase ramification

**Wiring:** Anytime on younger branches, but on older branches using guide wires is recommended - they can be very brittle!

**Propagation:** Use hardwood cuttings in winter and cold-treated seeds in spring. Air-layer in late-Spring after spring growth has hardened!

**Pests and diseases:** Watch out for scale, root rot and sooty mold!

**Styles:** Formal & Informal Upright, Slanting, Semi Cascade, Single or Multiple Trunks, Group Planting and Root-over-Rock.

Not good for Shohin due to leaf size!

Some species suitable for bonsai:

***Fraxinus excelsior***, known as the **European ash** or **common ash**, to distinguish it from other types of ash, is flowering.

The bark on young trees is pale grey and smooth, becoming rough and vertically fissured on old trees.

The buds are jet black.

***Fraxinus angustifolia***, the **narrow-leaved ash**, the bark is smooth and pale grey on young trees, becoming square-cracked and knobbly on old trees. The buds are pale brown, which readily distinguishes it from the *Fraxinus excelsior*.

***Fraxinus ornus***, the **South European flowering ash**, the bark is dark grey, remaining smooth even on old trees.

The buds are pale pinkish-brown to grey-brown. The flowers are produced in dense panicles 10cm long after the new leaves appear in late spring.

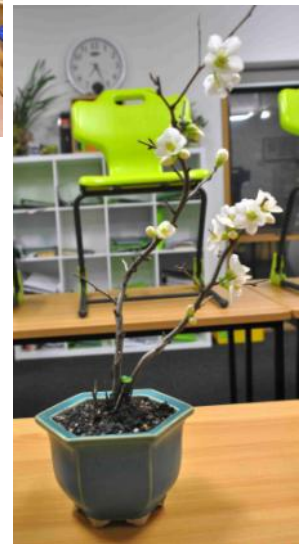




## On The Display Table



A selection of trees on the Display Table at the July and August meetings.



## BONSAI ART NURSERY

New Trading Hours

Mon, Tues, Thur, Fri - 9:00am to 5:00pm

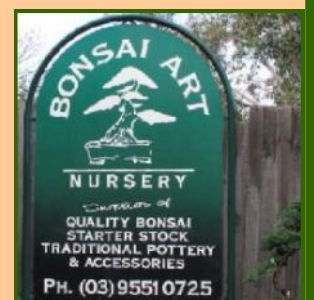
Sat, Sun - 10:00am to 4:00pm

Closed Wednesday

Great selection of bonsai, starters, and pots including a range of quality Japanese pots.

[www.bonsaiart.com.au](http://www.bonsaiart.com.au)

236 Old Dandenong Road, Heatherton



## Bonsai Calendar: September - October

Following are the main tasks to focus on during this time of year.

### Repotting/Root pruning

- When repotting, look for ways to improve the overall appearance of your bonsai. For example, changing the position of the tree by turning, lifting or leaning the tree. Also consider alternative pot choices.
- Watch for the buds to swell on deciduous trees. Repot before buds break into leaf.
- Begin your repotting with deciduous varieties such as, maples, oaks, elms (September) and then continue with varieties such as, cryptomerias, azaleas, pyracanthas and pines (October).
- After repotting, keep your trees in a protected area away from extreme weather (hot or cold)

### Wiring

- Wire all trees before repotting. This will minimize any movement to the tree after being repotted.
- Deciduous trees should be wired before breaking into leaf. Be careful not to damage the delicate buds while wiring branches.
- Watch carefully for wire damage at this time of year as most trees are growing at a rapid rate.

### Pinching/Pruning

- Begin to pinch back new shoots as soon as they appear.
- Frequent pruning/pinching will improve ramification and help reduce leaf size throughout the growing season.
- Remove dying flowers from the tree as it weakens the plant and encourages pests.

### Fertilizing/Watering

- With new growth, the need of water and fertilizer increases. Try to observe your trees individually to establish the amount and frequency of water is necessary.
- Avoid overwatering. Remember it is a process of wetting and drying.
- Use a slow release fertilizer (Osmocote/Dynamic Lifter) in combination with a liquid fertilizer (Maxicrop, Charlie Carp).
- It is better to fertilize regularly and frequently in small weak doses than give a strong dose now and then.
- With flowering species, fertilizing should commence after flowering.
- Water your trees (with plain water) before using liquid fertilizer.



Julie 0419 870 240 or

Pickup from YVBS/BSV/VNBC meetings, or as otherwise arranged. Also available at the **YVBS Sale Day**.



*Bonsairoots diatomite* is a SOIL CONDITIONER. It should be used to improve the structure of soil. Can retain 100% of water. **Note - Diatomite is temporarily out of stock due to difficulties at the mine. Contact us - for alternative pumice as a substitute.**

*Bonsairoots orchata pine bark* is a standalone growing substrate that can be used directly from the bag without sieving. Produced from 100% pure New Zealand pinus radiata bark, it is a unique, stable substrate for potting and re potting bonsai. Available in 40L bags and 20L buckets: sizes 3-6mm and 6-9mm.

*Bonsairoots premium 50/50 mix* consists on 50% *Bonsairoots diatomite* and 50% *Bonsairoots orchata pine bark*. This mix is extremely successful in the development of masses of fine roots on bonsai plants. It is very open and water drains quickly, helping to avoid root rot. Your bonsai in pots and growing pots will love it! Suitable for all plant varieties so no need for different mixes.



**New Stock!**

**Empty Bucket with Lid \$10**

Squat orchid pots are ideal for growing-on trees, promoting radial root growth and a flat root structure. High quality UV-resistant plastic, re-usable, will last for years.





# ヤラ谷間盆栽会

Volume 5 No 43  
July & August  
2018

Page 8

[www.yarrawalleybonsai.org.au](http://www.yarrawalleybonsai.org.au)

*A group for all lovers of bonsai in the "far east" of Melbourne*



**Yarra Valley Bonsai Society**  
PO Box 345  
Mount Evelyn, Victoria 3796  
Australia

*Looking Ahead to  
September & October 2018*



Nursery Trip "**SOUTHEASTERN EXPOSURE**" on Saturday 1<sup>st</sup> September, covering the Din San Wholesale Nursery, Bonsai Art Nursery and Collectors Corner! We've been again invited to visit Hachinoki Bonsai Pottery with an opportunity to purchase some pots. Refer separate email.



Our monthly meeting on 11<sup>th</sup> September will be starting with the Bonsai Basics Review "**Bonsai Forms**" by Rudi J. Followed by the **YVBS - AGM**. Members turning up on the night are encouraged to bring along the 'Project Trees' which they received from previous years to show its development. Continuing with our **10<sup>th</sup> BIRTHDAY CELEBRATION** enjoying some YVBS provided light supper, refreshments and some Story telling! **A NIGHT NOT TO BE MISSED!** Display Table: "Japanese Maples & Members Choice".



Our monthly workshop will be on Saturday 29<sup>th</sup> September, 1:00PM - 4:30PM at Cire Services - former UYCH.



Our monthly meeting on 9<sup>th</sup> October will be a Presentation/Demo on "**Maple on the Rocks**" by Peter Fewster. Great learning to be had! NO Bonsai Basics Review Session! Display Table: "**Accent Plants & Members Choice**".



Our monthly workshop will be on Saturday 27<sup>th</sup> October, 1:00PM - 4:30PM at Cire Services - former UYCH.



## Other Events



BSV RIPPONLEA BONSAI DISPLAY, Saturday 8<sup>th</sup> September 10am - 4pm, Demonstrations at 11am & 2pm, Sunday 9<sup>th</sup> September 10am - 4pm Demonstration at 12pm, Rippon Lea House & Gardens, 192 Hotham Street, Elsternwick. Tickets: Rippon Lea Garden Entry \$10 Adults, \$7 Concession, \$4 Child (4-15 years) & \$20 Family (2 adults & 2 children)



Satsuki Azalea Bonsai Interest Group Victoria Meeting on Saturday 15<sup>th</sup> September, 1:30PM - 4:30PM, at "Bonsai Art" Nursery, 236 Old Dandenong Road, Heatherton.



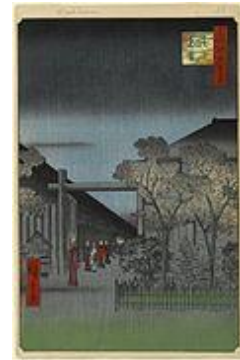
International Bonsai Art & Culture Biennale and International Penjing Creation Conference at the National Arboretum Canberra, Monday 17<sup>th</sup> September to Thursday 20<sup>th</sup> September. More Details on <https://www.nationalarboretum.act.gov.au/universalpenjingconference/home>



Northern Suburb Bonsai Group Annual Bonsai Show, Saturday 22<sup>nd</sup> September 9:00AM - 5:00PM and Sunday 23<sup>rd</sup> September 9:00AM - 4:00PM at Bundoora Hall, 20 Noorong Ave, Bundoora. Entry: Gold Coin Donation!

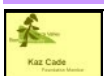


Bonsai Society of Victoria Exhibition, Saturday 13<sup>th</sup> October 9:00AM - 5:00PM and Sunday 14<sup>th</sup> October 9:00AM - 4:00PM, at Box Hill Town Hall, Whitehorse Rd, Box Hill. Entry \$5.00.



YVBS FORUM: For new members, it bears repeating that our club has an on-line bulletin board and archive. In addition to the announcements and discussions on topics of bonsai interest, the forum also contains many newsletters from other clubs around Australia. These are to be found (surprise, surprise) in the folder entitled "Newsletters from Other Clubs" and are kept for approximately six months. There are also publications such as "Bonsai Magazine" and the "Satsuki Society Newsletter" which are archived in the library folder available only to members. If you visit the site and register as a user, please email Rudi via the club gmail so that he may add you as a club member user. Just visit our main webpage

<http://www.yarrawalleybonsai.org.au> and follow the FORUM link on the left to the forum.



**Member Benefits** Refer to the website for a list of discounts to members upon presentation of a current & valid YVBS Membership card. "Freebies" of donated items are also made available from time to time at monthly meetings.

## ADVERTISERS & SPONSORS:

Advertising on our website and/or in the newsletter is available for any registered business or sole trader. Society Sponsorship opportunities are capped at three for any year, however supportership opportunities still remain for any business in an area related to the craft of bonsai.

For a prospectus or further information contact Rudi via the society's external email: [info@yarrawalleybonsai.org.au](mailto:info@yarrawalleybonsai.org.au)