

The YVBS meets on the second Tuesday of each month at the Mt. Evelyn Presbyterian Church Hall, 30-38

Birmingham Rd.
Mt. Evelyn



118 A12

Informal/Review sessions begin at 7:00pm with a call to order at 7:30.

Saturday Workshops are 2pm on the first Saturday of the month ex Jan2010. (Japara House Shed; Melway 52 D7) Check the website for details!

Inside this issue:

<i>Nov.Dec News con't</i>	2
<i>Quiz Question</i>	2
<i>Getting to Know You</i>	3
<i>Ask Mr. Miyagi</i>	3
<i>"The Natives Are Restless"</i>	4
<i>Tim's Tips</i>	5
<i>Website of Month</i>	5
<i>Kanji of the Month</i>	5
<i>Tree Mini-Profile</i>	5
<i>Fame and Fortune</i>	6
<i>Library Update</i>	6
<i>Trade Table Update</i>	6
<i>Draft 2010 Syllabus</i>	7
<i>Accolades, Kudos and Thanks</i>	8

The Yarra Valley Bonsai Society Newsletter

Highlights from November & December 2009



Lindsay Farr with his latest "Extreme Makeover."

It's been a busy calendar year for our club, with the first show and a membership now at about sixty, and well on the way to our goal of 70 by June 2010. Even with the "post-show" hangover, we weren't exactly coasting in November and December.

Speaking of the show, thanks to the directorial skills of Mike C. and the webmastering of Mark C, a 10 minute video overview of the show is now linked on our website's mainpage.

Lastly with regard to the show in October, we are happy to report that the show actually resulted in a fair bit of

revenue for the club to the tune of some +\$400 after expenses. This, together with the September sale opportunity generously afforded by "Bonsai—The Imagination Tree", has allowed us to acquire some important bits for the Library, and to boost our trade table inventory. (See pages 2 & 6 for additional information.)

A bit of shuffle within the Committee of Management has seen Rudi J. voted unanimously to the position of Vice-President and head of syllabus. Rudi has been hard at work putting a program together for 2010, a draft of which appears on page 7. In addition, the committee has set tentative dates for another novice course, a possible intermediate course, and buying trip dates. Membership input is sought prior to January 15 per the syllabus thread on the Club Forum.

In other committee news, Jarrod S. and Mike C. have put their hands up to join the management masochists, filling Rudi's spot upon his 'promotion' to VP and also occupying a new chair in response to the growing membership ranks respectively. (In our constitution, the Committee of Management will be expanded by one member for each additional rise of 25 in club subscriptions.)

On a last bit of Committee news, the Management Group will meet on 27 January to consider a wide range of goals and strategies for 2010. From fiscal and manpower capacities, to 'outside the box' storming, we hope to keep the group responsive to the needs and interest of members of ALL levels of bonsai crafting proficiency, so if members have any ideas or initiatives worth considering, please contact us via the yarravalleybonsai@gmail.com email address by 15 January.



Craig with some of his amazing native bonsai masterpieces!

Calendar Dates:

- 2 January (Sat): NO WORKSHOP
- 12 January (Tues): YVBS Monthly Meeting. 7.00pm. ALL WORKSHOP.
- 12 & 19 January (Tues) Kids' Classes at Bonsai—The Imagination Tree. 10.00am– 2.00pm
- 27 January (Wed): YVBS Committee of Management Meeting. 7.00pm, Bonsai Imagination Tree.
- 6 February: Saturday Workshop 2.00pm Japara House Shed
- 9 February (Tues): YVBS Monthly Meeting. Featured Guest Speaker: Trevor McComb, Bonsai Art Nursery. Review/Overview Session begins at 7pm.
- 23 February (Tues): YVBS Committee of Management Meeting. 8.00pm Venue TBA
- 3-4 April: Mornington Peninsula Bonsai Society Show.
- 3-4 April: Bendigo Bonsai Club Show.
- 14-17 May, AABC Convention, Sydney. (www.aabcltd.org)

November-December Highlights *Con't from page 1*



Members at the November Bunnings Demo

The club elected to pass on participation & demo table at the Lilydale Show this year, in favor of a recruiting opportunity at the Montrose Market and Bunnings Chirnside Park. However, it is worth noting that member Ray walked away from that show with a boot full of blue ribbons. Well done, Ray!

Most important amongst our events are of course the main content sessions at our monthly meetings. Two masters, back-to-back, were a great start to meetings in our new venue, the Mount Evelyn Presbyterian Church Hall. In November, Lindsay Farr of Bonsai Farm in Hawthorn got our cerebral cogs churning with a "what is bonsai?" storming, followed by a radical Pygmalion-like transformation of a tree. A bit



too hot that evening for a root-prune/repot, the session nevertheless left members inspired and not merely perspired.

The temperature was a tad more hospitable in December, which saw Jarrod S. lead the Review/Overview Session on candle and bud pinching on pines. The handout from his session is available on the on-line FORUM. Rounding out the evening and 'break-up' soiree was a session present by Craig W. on selection and care of various native species as bonsai. As with his previous club talk, he brought some absolutely stunning masterpieces as demonstrations to the potential of natives to equal the grandeur of 'exotics' of the northern hemisphere. His notes appear on page 4 of this edition.

Well, that's about it for a busy year. We wish all of our members and readers a safe and meaningful holiday season!

Members' Trade Table Protocol for 2010: Any member is entitled to sell bonsai-related items at monthly meetings or workshops. (Sorry, those old 12" ABBA albums will have to wait until the next hard rubbish pickup.....)

- 1.) Arrive at the meeting by 6.45, providing the trade table facilitator, Warren S, a written list of items you would like to sell, your name, and price sought. (Workshop vending needn't require early arrival.)
- 2.) Label each item for sale with a price and with the name/initials of vendor.
- 3.) If a price other than that listed is negotiated between selling member and purchasing member, the vendor must inform the Trade Table head of this.
- 4.) The Trade Table facilitator, not the selling member, receives cash from the sale and logs the income.
- 5.) The Trade Table facilitator or designated substitute will then convey the 'earnings' to the member, less 10% for the club's 'cut'.
- 5.) At the conclusion of the evening remove unsold stock and reconcile balance of payments vs. club with the Trade Table facilitator. "Credit" may be applied for purchase of Club Trade items at discretion of Trade Table head.

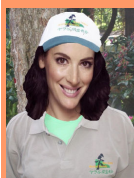
QUIZ QUESTION: A Trunk Splitter is:

- A. A tool for turning single-trunk trees into twin trunks.
- B. An implement for torturing elephants.
- C. A tool for making trees more pliable for shaping.
- D. A divorce procedure whereby family treasures are divided between litigating parties.
- E. None of the above.

(Answer— page 5)

Register for the FORUM- To All Current Members of the YVBS:

In keeping with our goal for minimal paper usage when communicating with members, and to stimulate discussion between members and with folks outside the club, we will rely more and more on the on-line FORUM in 2010. Please visit the forum via the link on our website or per URL below and register, sending your FORUM username to yarravalleybonsai@gmail.com so that we may add you to the Club Members section. All registered FORUM members will be entered into a special raffle at the January monthly meeting. <http://yarravalleybonsai.org.au/yabb/YaBB.pl>



Update from the Shirt Stirrers:

If you have ordered a T-shirt, Polo, or cap and have NOT received it yet, please let us know before or at the January meeting. We tried to keep a handle on it all, but with final delivery mere hours before our October Show, things unraveled a bit and we want to be sure nobody's order has fallen through the cracks. Once this is sorted remaining shirts will go up for sale and orders taken for the next print run. Cheers!

Getting to Know You... Bro & Sis



Jen: I live in Croydon with my husband and our tribe of pets that include 2 rottweilers and 4 cats. Apart from Bonsai Club I am involved in the Knox Dog Obedience Club, the Tracking Dog Club and love to ride my Ducati when time permits. I have been an Animal Management Officer for 10 years and have now become the Fire Prevention Officer for my council. I got given my first Bonsai 4 years ago for a wedding present (killed it) and have since got many more. I especially love the ones I make myself, I don't really know if they are any good but I like them and that is all that matters at the end of the day. I don't really have any preference to a bonsai style but hope I can have a collection like Peter with the natives one day and generally love my garden in general. The YVBS is by far the most welcoming club I've ever joined, the people are fantastic and have great advice.

Mike: I'm a National Quality Systems Manager and my hobbies include bonsai, renovating my house, hot rods and music. My favourite trees are junipers and elms. I grew up with a bonsai in my parents' garden and was intrigued by it, but it wasn't until I was re-introduced to them by my sister, Jen, that I really got addicted. I enjoy being part of The YVBS and I look forward to the Workshop Saturdays and the Monthly Meetings, as bonsai, has for me, become both social, a way to relax and unwind after my day at work and a personal challenge to constantly improve my skills and my trees. I have only been a member of the YVBS for 10 months, but it has been a great 10 months and very personally rewarding.

In each newsletter, we profile a member or two as a means of getting to know each other better. In that spirit, and as our group continues to grow, members are reminded to bring their nametag/membership cards to meetings.

Ask Mr. Miyagi.....



Q: Dear Mr. Miyagi: We had a really hot week of weather here in Victoria in early November and a slightly less severe spell in mid-December. I admit I wasn't really prepared for it. The strange thing was that I had two identical specimens in two virtually identical pots side by side and one nearly died and the other seemed to almost flourish. What's up with that?

A. Dear Reader: There could be at least a dozen factors which might explain this difference. Even if you eliminated any variables you might have still wound up with the same end result.....plants are individuals.....much like identical twins won't always have the same medical history. Anyway, here are some possible explanations, given in no particular order of likelihood:

- One tree may have a pest or fungal infestation, giving it less stamina under conditions of heat duress;
- Even if last repotted at the same time, a recent root prune may have resulted in different recovery times;
- Perhaps the soil used on one tree in the last repotting was significantly more open and less likely to retain moisture;
- Possible pH difference or salt build-up with one tree.
- Maybe one tree happens to be the unlucky target of possum ablutions.
- Perhaps the last feed simply yielded different results in terms of vigour;
- When last weeded, perhaps weed roots were left in the soil of one pot, either rotting or continuing to monopolize nutrients;
- Although you state they are side by side, it's amazing the difference that the presence or absence of direct sunlight can have-- if one tree (or its pot!) is semi-shaded for a couple of crucial afternoon hours in contrast to its brother enduring direct sunlight the whole time, the result may speak for itself;
- We can't see the roots, but if one tree has sent too many roots to the outside or sunward side of the pot compared to the other, the heat would be more likely to cook them;
- A hot spell can dump too much fertilizer too quickly if you are using the waxy balls; the weaker tree might have overdosed;
- It's possible to over-water.... Or possibly the drain holes in the weak tree are clogged and the damage is from too much water...

Members may submit questions to Mr. Miyagi c/o the YVBS club email: info@yarravalleybonsai.org.au

“The Natives are Restless”

This month's entry is a summary of some key points in care aspects from Craig W's talk on natives at our December monthly meeting.

Natives as bonsai were once seen as quaint at best, and enigmatic and tacky at worst. Slowly we're developing good stock varieties, winnowed from seeded variations. There's been a positive movement to 'de-mystify' these trees and their suitability for bonsai: I use the same soil, the same food, and the same pruning regimen with my natives as with my 'exotics'. The only differences would be the need to repot most in summer only, to seal pruned branches, and to not leave them with full foliage after a root prune. Natives also have a relatively long growing season... lots of pinching-- even until July. As far as feeding, I use primarily seasoil, but blood and bone is OK for all but the proteae family (Banksias, Grevilleas). All natives require some full sun with the exception of the beautiful and ancient native beech (notifagus), which in the wild is found only on south-facing higher altitude slopes of Victoria and Tasmania. Natives have strong apical dominance, meaning the energy and effort is put into growing upwards at the expense of lateral expansion (in contrast to, say, azaleas).

Melaleuca: A great bonsai specimen, though to get good results you need to trim them frequently...don't let them run too much. Linaifolia is an especially good species to work with.

Figs: Port Jackson figs are preferable to Moreton Bay figs, as the leaves on the latter are more difficult to reduce. Can be wired from time to time more successfully than many native species and show no loss of vigour if cascaded. Figs are fast-growing and hardy, however, you need to make sure the soil is kept on the dry side in winter. If black spots appear on the leaves, your tree is either too cold or its soil too wet.

Eucalypts: I'm not too keen on these as bonsai, since branches die back seemingly out of the blue, making it frustrating to craft. It is especially important to seal all pruning cuts immediately with eucalypts. If you wire branches down below the horizontal, you must wire ALL branches down to roughly the same angle or else there may will be a selective die-back. This is a basic rule of thumb for all non-fig natives but it is an absolute for eucalypts.

Lemon-Scented Ti Tree: These are wonderful and fragrant, yet alas they do not shoot from the hardwood as do other natives. Don't let this dissuade you from adding this species to your collection..... it just means a bit more labour intensity and a less forgiving species for the prune-and-grow shaping strategy.

Banksia: A veritable "must have" for any collection of natives. Don't let them flower while they are developing, as this uses up a large amount of the tree's energy better used for ramification and development.

Acacia/Wattle: I've found these to be decent bonsai specimens, though not my favorite. That said some dwarf varieties are now being marketed that may make fine examples in the hands of the up-and-coming generation of artisans. To their advantage they have nitrogen-fixing nodules which aids in development.

Lillypilly: A great first native tree for beginners. They are hardy and shoot from hardwood, but for classical forms of bonsai, it's difficult to get good ramification with these.

Sheokes: These are the "Black Pines" of native bonsai.... no collection of natives is complete without them. The bark is fantastic, they respond well to prune-shaping and they shoot back very well even from the trunks. The soil must be kept moist on these....they tend to be unforgiving of a complete dry-out.

Christmas Shopping at A to Z Bonsai Starters!

Don't forget to include **A to Z Bonsai** (426 Monbulk Road, Monbulk) on your Christmas shopping route. *(OK, you'd probably be buying for yourself rather than others.... But there's no law against giving yourself a little Christmas present! Or visit us after the holiday with that Christmas envelope from Nana!)* YVBS Members receive a substantial discount down to a mere 10% above wholesale price. We have lots of new training stock since August: cedars, junipers, crab apples, maples, ginkos, hawthorns, elms and more. Tel: 9756 6086 Hours: 10am-4pm. Open late Christmas Eve. Closed on Christmas Day, but open on Boxing Day, New Years Day and 2 Jan. Beyond that open every day except Mondays.



*Know what you want;
Know what makes you feel good about yourself;
Know what brings you into harmony with others.
—I Ching*

From the Bonsai Dictionary:

Jinjing Pliers: *jī'ning plā:erz* /noun/ A tool used in extracting a lemon slice out of a Jin & Tonic or an olive from a jin and vermouth martini before it is fully drunk.

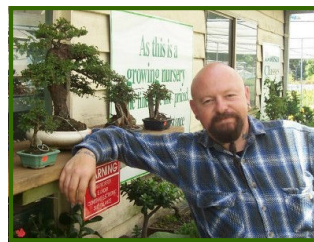




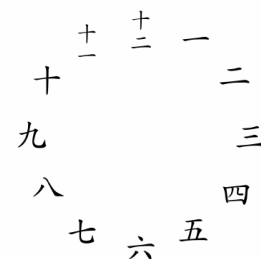
"Tim's Tips" Corner

In this segment I want to talk a little about pH. For those too afraid to ask, it's basically a spectrum from acid to alkaline as a quality of soil or water. Neutral is 7.0 on this scale; some plants like things on the acid side of neutral, whereas others prefer slightly alkaline. The lower the number the more acidic your soil is, the higher the number the more 'base' or alkaline. (It's also logarithmic like the earthquake scale, meaning that a 9.0 reading is ten times more alkaline than an 8.0 reading.) Like I said in a previous segment, the best feeding regimen in the world is worth nothing if your soil pH is not optimal. Most trees can be fairly forgiving of small spikes in pH, so don't obsess too much. On the other hand, it's worth getting a pH tester (the drops rather than the voltaic meters). I tested the tap water with this the other day and saw the result somewhere between 8.5 and 9.0a bit too high for most plants' liking. That's one reason why rainwater is preferable. What if you have no choice but to use tap water? One thing is to let a can or jug sit overnight. You can also add a small amount of milk or bicarb soda to bring it down towards 7.0. Or buy a "pH Up/phDown Kit" at a garden centre or pet store (used for aquariums). It's worth measuring the water pH....not every time you water, but particularly if you are going to give your trees an immersion bath. We all know that immersing your trees in a bath until the bubbles disappear is like a spa visit. This can help dissipate salt residue from fertilizer and can help strengthen the roots against heat and pests. Doing this in a bath of pH neutral water with a bit of seasol or wetter/soil conditioner is even better. I mean, if you are going to go to the trouble of bathing each tree, you might as well take a couple of extra minutes and ensure that the pH is within an acceptable range. (And test the bathwater as you go....you'll find that after a couple of dozen trees the bathwater pH will have altered noticeably!) I found a list of optimal pH ranges for various bonsai specimens: <http://www.bonsai4me.com/AdvTech/AT%20tree%20ph%20ranges.htm>

Tim Vivoda is the owner of A to Z Bonsai in Monbulk. His section appears in each newsletter.



Kanji/Ideograms of the Month



As the clock ticks down to the new year, here's a timely graphic to introduce the ideograms for numbers 1-12. They are the same in Japanese and Mandarin....with some numbers pronounced similarly. (Note 'Kyu' for nine which we saw last month in Kyushu).

Speaking of '9', although the ideograms are different, the cardinal number is a homonym [=pronounced the same] with the word for **agony**; therefore gifts are not given in groups of 9. (Forest plantings with 9 trees are still OK.) This nuance of culture is even more common with 4: **Shi**, which is pronounced the same as the word for **death**. Hospitals and sometimes older hotels often will not have a fourth floor or a room 4, and gift packages (especially for housewarming) will **never** contain **FOUR** of something.

Quiz Question:

The answer is "C" and "A". A trunk splitter, as we saw at Mr. Song's demo in September, is used to make trunks and large branches pliable. Kind of like breaking a bone in order to reset it, the wood is split, wrapped, wired, and left to heal as a part of shaping.

The tool has been known, in the hand of experienced artisans, to split trees into double trunk trees or in raft plantings.



2010 Newsletter

Contributors Sought:



For a New Year's Resolution, how about indulging your creative side and kicking in with some pieces for the newsletter? If you are interested in doing some research or having your own column, let Bill know at the next meeting or by email!

Tree Mini-Profile: Picea-- Spruces

Picea aren't just great Christmas trees....they make excellent bonsai specimens. The most common species here are Picea Albies (Norway Spruce) and Picea glauca (White Spruce), with each species marketed into several cultivars or subspecies. In some ways more pliable than pines, the needles tend to be much shorter, making them very suitable trees for shohin/smaller sized bonsai. In general, spruces like a bit of full sun each day, but too much afternoon sun can singe the needles. Proper ventilation is important for spruces as is a free draining soil, which needs to be

kept moist.... It tends to make its unhappiness known quite obviously when the roots are water-logged. According to Tim's link above, picea, as seen in pines, like a soil pH of 5.0-6.0. Don't feed over the hotter months, but do make sure you provide spruces with trace elements. Prune in autumn only after you reckon the last heat spell has come and gone. Like junipers and pines, they are prone to mites, particularly in late summer.



Website Of the Month:

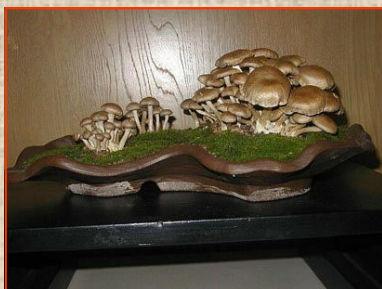
We are honored to have Trevor McComb visit us in February and we list his nursery here as 'Website of the Month'.

<http://www.bonsaiart.com.au>

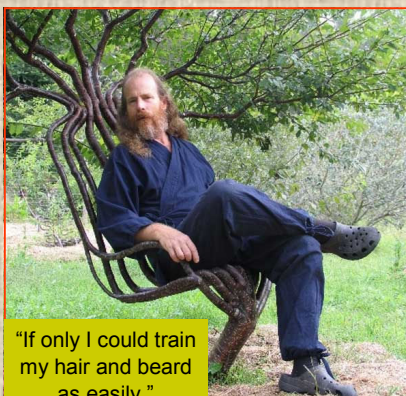


FAME, FORTUNE AND GLORY SECTION

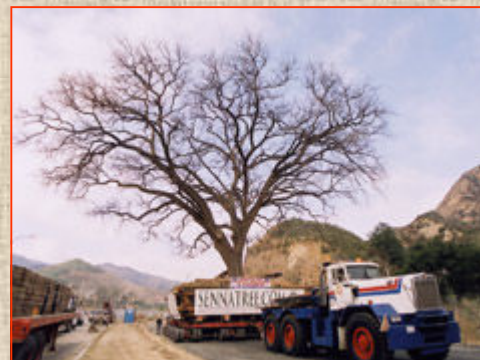
No Fame Fortune and Glory this month; we'll have to make do with Shame, Bawdy and Gory



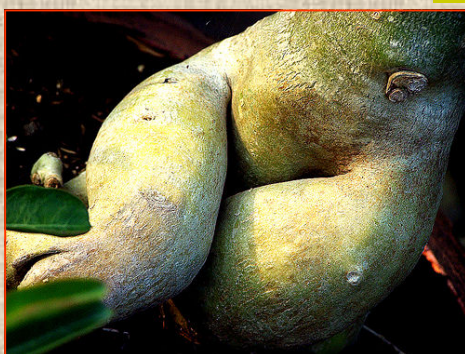
Would this be a "Semi-Fungal Upright?"



"If only I could train my hair and beard as easily."



World's largest repotting exercise...(True!)



It was recently discovered that Rubens was not only a famous painter, but a bonsai artisan who worked with figs.



If priced like most Lego, it probably cost more to build this than a live bonsai would have fetched.....



And you thought the guy who writes this newsletter had a twisted sense of humor.....



"Root Over Clutch": one of the less well-known styles...

Yamaha, Yamadori, or both?

**Library Check-out!**

We've received some great donations from the Waverley Club and have also recently acquired 100+ copies of Bonsai Today/Focus in mint condition. We'll have a list of holdings posted soon on the FORUM, where we also are open to your feedback re future acquisitions. Members are reminded that the borrowing period is for one month. A policy of fines is in the works, but we're again open to members' input: from public lashings, to a freeze on borrowing rights for a period equal to overdue time, to extra set-up and clean up shifts for monthly meetings.

**Trade Table Cheque-out!**

Thanks to the fact that we now have on-site storage space, we hope to beef up our trade table offerings even further. Members are reminded that we can also source individual items (tools & pots) at a discount from Imagination Tree and A to Z. See the FORUM, the hard copy displayed on corkboard at meetings, or earlier 2009 newsletters for items. Wire seems to be a popular seller, but (with the exception of pots) if there are items you believe we should stock, please let Warren (Head of Trade Table) know. For Member's section of Trade Table, see page 2 for procedures for 2010.

YVBS - Syllabus 2010				
2010		Overview / Review (7:00PM - 7:30PM)	Main Event / Theme (7:30PM - 9:00PM)	Display / Style & Members Choice
January	12	Workshop on (not only) Natives		Natives "anything goes" & Members Choice
February	9	Cascade, Semi cascade and Windswept	Guest Demonstrator: Trevor McComb "BONSAI ART"	Figs "show-off" Roots & Members Choice
March	9	Tools Basics - selection, care etc.	Tools Advanced - sharpening etc. with Jeff Barry	Juniper "Cascade / Semi cascade" & Members Choice
April	13	Triangular Shaping, Branch Selection and Wiring Basics	Guest Demonstrator	Autumn Colors "various styles" & Members Choice
May	11	The Lesser Styles: Literati, Twin Trunks, etc.	Workshop	"Informal Upright" & Members Choice
June	8	Wintercare - watering, fertilizer etc.	AGM & "Trunk Splitting and using Raffia"	Shohin "various styles" & Members Choice
July	13	Tree Placement/Negative Space	Pines the "Classic Bonsai" Tim Vivoda "A - Z Bonsai"	Conifers "various styles" & Members Choice
August	10	Guest Demonstrator (VTP?)		Nebari & Members Choice
September	14	Pots: Selection, Style Colour	Workshop and Root pruning and Repotting your trees with Chris Sirre	Japanese Maples "various styles" & Members Choice
October	12	Pests and Threats - identifying, remedy & prevention	Guest Demonstrator: Lindsay Farr "BONSAI FARM"	Azaleas "anything goes" & Members Choice
November	9	Air Layering & Cuttings	"Master (Chefs) Artists Bonsai" working in Teams!	Deciduous "various styles" & Members Choice
December	14	Surviving the Summer - plant placement, watering etc.	Roundtable Critiquing Christmas Break-up !	"On or In the Rocks" & Members Choice

Note to members: The above is a draft copy, which the Committee of Management will re-examine in late January. If you have any feedback, please visit the FORUM and log your comments in the Syllabus thread of the Club Business folder by 15 January. All members, regardless of level, are invited to take part in this! We're also looking at break-out sessions for absolute beginners. Note also that the syllabus includes the course and outing offerings mentioned on pg.1-2. The Committee prefers not to work in a vacuum, making guesstimates of what the membership would find interesting and/or useful in terms of furthering peoples' skills and appreciation of bonsai/penjing..... Thanks.

ヤラ谷間盆栽会

November
December 2009
Volume 2 No. 6

www.yarvalleybonsai.org.au

A group for all lovers of bonsai in the "far east" of Melbourne.....



Yarra Valley Bonsai Society
PO Box 345
Mount Evelyn, Victoria 3796
Australia



"Merii Kurisumasu"

"Akemashite omedetou gozaimasu"
(Happy New Year)

明けまして
おめでとうございます

January and February 2010 notes

- As first Saturday of the month falls on 2 Jan, there will be no workshop for that month; instead the monthly meeting will be an all-workshop event. It's a good time to work on natives especially. Bring your trees for a bit of crafting and primping, time for which seems fairly scarce during the silly season! Display Table theme will be Natives (ex Figs, which will theme the February Table) or Member's Choice.
- At the January meeting we'll also have a raffle for all club members registered on the YVBS Forum..... Just registering IS your raffle ticket, so register by 11 January. (See page 2.)
- February will have Cascades, Semi-cascades, and Windswept styles as the theme for the 7.00-7.30pm Review/Overview session, followed by Trevor McComb of Bonsai Art Nursery on a topic/demo of his choosing.
- Member Sue H. gave a brief report on the resurrection of Bruno's garden in Marysville. There's still a fair bit of work to do to get the place close to its former splendor, and anyone with a spare afternoon to assist in weeding or revegetating would be very much welcome. Contact Sue at suehoff@hotmail.net.au or 0418 372 554 if you'd like to help out.
- We're looking at a purchase of Piceae (spruces) from nurseries at post-Christmas discount. (See page 5 for a profile) We'll keep the membership informed as to progress on this.

Accolades, Kudos, and Thanks..

- To Lindsay Farr for enduring the chaos with our first meeting in the new venue, for putting up with the sauna, and for donating a set of DVDs of his World of Bonsai series to our library. (There's already a waiting list!)
- To Craig W. for his VERY informative session on Natives as Bonsai at the Dec. meeting and yet another tree donated to the raffle.
- Speaking of the library, thanks are due for the recent donations to our holdings....8 items at the last meeting alone! And a special thanks to the Waverley Group for warmly welcoming three of our committee members to their Nov meeting and for the donation of several items to our library.
- Our new 'officers': to Rudi, elected as Vice-President, to Jarrod who filled Rudi's vacant spot on the committee, and to Mike who was elected to the committee.
- To the Geelong Bonsai Club for donating a fine set of show accoutrements.



Member Benefits Please refer to the website for a list of discounts received by members upon presentation of a current and valid YVBS Membership card. "Freebies" of donated items are also made available from time to time at monthly meetings.



BONSAI
BY SASHI-EDA
EST 1993

**Calling ALL
Victorian Bonsai
Clubs!**

From 2 January 2010, present your valid membership card from any bonsai group/club/society in Victoria and receive 25% off tools, pots, supplies and training stock.

Find us at our website

www.sasheda.com.au or per our blog:
<http://bonsaitheimaginationtree.blogspot.com>

Although we have merged and moved, we're still a not-for-profit social firm assisting some of our employees with disabilities, and as such we're still open to volunteers who wish to help out and to learn a bit more about bonsai along the way. Contact Chris via nursery@sasheda.com.au for more info.

ADVERTISERS & SPONSORS:

Advertising on our website and/or newsletter is available for any registered business or sole trader. Society Sponsorship opportunities exist for any business in an area related to the craft of bonsai.

For details contact Peter via the society's email: info@yarvalleybonsai.org.au