

The Yarra Valley Bonsai Society Newsletter

Highlights from January & February 2010

The YVBS meets on the second Tuesday of each month at the Mt. Evelyn Presbyterian Church Hall, 30-38

**Birmingham Rd.
Mt. Evelyn**

Melway 118 A12

Overview & Review sessions begin at 7:00pm with a call to order at 7:30.

Saturday Workshops are 2pm on the first Saturday of the month. (Japara House Shed; Melway 52 D7) Check the website for details!

The start of 2010 saw us quickly back into the swing of things. Although we've been relatively lucky regarding heat this summer so far, with only perhaps a half-dozen days this season where the temperature flirted with 40, there's always plenty to do.

We've debated the 'month off' idea for our annual calendar and instead opted for January as a workshop month, given that the holidays disqualified our 'first Saturday of the month' meeting. Indeed aside from our frantic pre-Show meeting last year, it was the first all-workshop monthly meeting. The jury seems to have returned with a favorable verdict: it's nice to have a meeting less formally programmed in order to give members a bit more time to forage around the trade table, poke about the library, and in general just chat with each other.

The syllabus for 2010, finalized with much work and effort by Vice-President and Syllabus Commissar Rudi J., is available on the forum for download and included herein on page 7. Rather than a split between the extremes of lecture/demo and free-form workshop, we've struck the Gordian Knot down the middle and have opted for themed or facilitated workshops. For example, the grafting workshop will be hands-on for the attendees; experienced grafters, or those members with no current interest in grafting, are still welcome to bring in plants per choice for work, wiring, and styling ideas.

Speaking of workshops, we've had a look at extending the Saturday workshops, or perhaps shifting the day in order to accommodate more members. However, given the results of the forum poll and the availability of prospective venues, we

have decided to leave it on Saturday afternoons at 2pm, extending it to 5pm to allow members who may not be freed up until later in the day to attend.

The syllabus lists course offerings for 2010 as well as dig-



Trevor McCombe speaks on stock selection

Despite the heat and poor lighting, Trevor still makes great progress trimming this black pine.



Inside this issue:

Jan Feb News con't	2
Quiz Question	2
Website of Month	2
Getting to Know You	3
Ask Mr. Miyagi	3
"The Natives Are Restless"	4
Tim's Tips	5
Kanji of the Month	5
Tree Mini-Profile	5
Page Fillers	6
Library Update	6
Trade Table Update	6
2010 Syllabus	7
Accolades, Kudos and Thanks	8



FROM THE JAN WORKSHOP: "It's not a car engine we're huddled around, so does it still count as 'male bonding'?"

Attention All Insomniacs: Back issues of our newsletter can be found on our website: www.yarravalleybonsai.org.au/newsletter

Calendar Dates:

- 6 March. YVBS Workshop 2pm Japara House, Montrose.
- 9 March YVBS Monthly Meeting. 7.00pm. Mt. Evelyn Presb. Church Hall
- 13-14 March. Canberra Bonsai Society—Exhibition of Natives as Bonsai. Aust. National Botanical Garden, Canberra.
- 27 March. YVBS Public Talk/Demo 10.30am Boronia Library
- 3 April YVBS Workshop 2pm Japara House, Montrose.
- 3-4 April. Mornington Peninsula Bonsai Society Show.
- 3-5 April. Bendigo Bonsai Club Show. Uniting Church Hall.
- 13 April YVBS Monthly Meeting. 7.00pm Mt. Evelyn Presb. Church Hall
- 14-17 May AABC Conference Bankstown/Sydney, NSW (pg.6)
- 30 May. (Sun) BSV Sales Day. 10am-2pm \$2 entry. Kew Masonic Lodge. Melway 45 G3/4
- 26-27 June. Bonsai Workshops with Hirotoishi Saito in Ballarat

See also the Events Calendar on our website: www.yarravalleybonsai.org.au

January—February Highlights *Con't from page 1*

gings and nursery visits. More information on specific destinations will be forthcoming closer to those dates.

As far as club business, a spruce sale yielded only a couple of takers, but a selection of used pots and trays recently acquired was a big hit in February. We have elected to do away with the catalogue ordering system now that there is ample storage space. However, we will be speaking with reps of the two local bonsai nurseries about a monthly stack of items. Also in the trade area, as a heads-up, June will be a "10% Free" meeting, whereby member-to-member sales will not be subject to the usual 10% GST (Greedy Society Tax).



Co-Librarians Andrea and Ruth smile for the camera to charm a few extra tables for their growing collection.

The February meeting was a hot one, and the predicted early evening cool change was, alas, a bit tardy. Thanks to the connections of Mike C. we were able to borrow (and will purchase for the future) an industrial-sized fan. It was a lesser of two evils that night: deafness or heat prostration, but members weathered it with good humour. Of greatest surprise was the overflowing display table! Using (with permission) an idea from Bonsai Society of Victoria, we started a raffle box: any member bringing in a Display Table tree gets one ticket for an end of year draw as well as a complimentary ticket for that evening's raffle. Coincidence

or not, the results were great, and a thanks to all members who brought in trees!

Saving the best for last, we were grateful to have a talk and demo by Trevor McCombe of "Bonsai Art Nursery". Amidst the heat, fan noise, and less than optimal lighting, Trevor gave a great session on both macro issues facing beginners as well as specifics for fine tuning a shaping strategy. Many thanks to Trevor for making the trip up to the hills. We look forward to seeing you back again, and we'll certainly be visiting you in our nursery trips this winter!



Feast or Famine: A bumper crop for the Feb Display Table....finally!



Members used the unstructured workshop time in January to check out the library's new acquisitions



Sue's Bushfire Relief Update: The Marysville Triangle Development Group has set up a 'community nursery' to hold and care for donated plants until people are ready to utilize them. Many Marysville people haven't even started to rebuild yet – for many reasons. Others have had to wait to determine what trees/plants are going to recover, and what will have to be removed, before making planting decisions. Thanks to a fantastic donation of \$30,000 from Sanitarium, and a work party funded by them, the nursery is now set up, has an automatic watering system, and a horticulturalist employed 2 days per week to care for the plants. Lorraine lost her own home and horticulture/landscaping business in the fires, and this role is providing her with some income while she rebuilds her life. Lorraine used to care-take the gardens of a number of conference centres. There are thousands of plants being cared for, until autumn planting season, or until building is completed. Volunteer assistance is welcome with the day-to-day maintenance of the nursery – potting up, fertilizing, trimming, etc. etc. See www.plantaid.com.au for the contact phone

QUIZ QUESTION:

(Answer— page 5)

Centuries ago, before the advent of plastic and wire mesh for screening drainage holes, which of the following was used:

- A. The spine and bones of a fish.
- B. Dried nettles or thistles.
- C. Shards of broken pots.
- D. Mesh made of bamboo treated with sake.



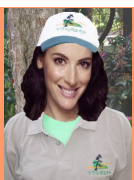
Website Of the Month:

This issue we highlight the website of the

Canberra Bonsai Society

www.cbs.org.au

There are some good photos on there as well a couple of videos. There is also a link to the website of the National Bonsai and Penjing Collection. Although their links page doesn't include our club (yet) it's a good list. Also there's the new Bonsai Knowledge Database or Wiki. See Page 4 for further details on this.



Update from the Shirt Stirrers: A final call for all order pickups! Remaining shirts and caps **will** be sold on a first-come first-serve basis starting at the March meeting...first come first serve!

Remaining: 4 medium Ts, 1 large T, 1 large Polo, 1 medium Polo, one cap

Getting to Know You...



Andrew: "I live in Upwey with my girlfriend, our 4 yr. old daughter and Boston Terrier. I've been into bonsai for about 5 yrs. getting slightly more serious in the last 3 or so. Favourite style of tree is the Bunjin/Literati style and fave trees are Maples, Pines and Natives. Apart from bonsai I enjoy driving/working on my rat-style 60's Volkswagen Beetle and painting. I work as a tattooer and have so for 16 yrs. running my own shop for the last 10; its a full custom appointment only studio and keeps me very busy. I enjoy the club for the extensive knowledge and experience of some of our members also the friendliness and inspiration. I particularly like the different speakers/presentations we've been lucky to have."

Stephen: "I have been practicing the art of Bonsai for approximately 27 years. The majority of this time my progress has been by the painful and slow method of trial and error

and reading the occasional book on the subject. I joined our club to accelerate the rate of my learning and reignite my passion for Bonsai. I really enjoy meeting other club members, who share my passion for Bonsai and comparing notes about techniques, styles etc. I very much enjoy the guest speakers and using the extensive library that has quickly developed. I have been married for 30 years and have three adult daughters. I am self employed having several food shops in shopping centre food courts in Melbourne and Geelong. I also regularly consult to the food retail industry across the country. Apart from Bonsai my other passion is bike riding. I regularly compete in races and events in both Mountain Bike and Road across the state and spend many hours on the saddle honing and developing my skills and working on my fitness and endurance. My favorite Bonsai styles are... pretty much all! I think when correctly and masterly done all the styles are beautiful and inspiring. As for favorite tree, again, I can't say. I think all trees are things of great and unique beauty."

In each newsletter, we profile a member or two as a means of getting to know each other better. In that spirit, and as our group continues to grow, members are reminded to bring their nametag/membership cards to meetings

Ask Mr. Miyagi.....



Q: Dear Mr. Miyagi: I have a large number of deciduous trees and the only reason I put up with the watering dramas in summer is to enjoy the autumn colours of these trees. Is there any way I can make that bouquet of gold, orange, red and yellow last longer?

A: Dear Reader: As far as I know, there is no autumnal Viagra which will make those colours hang around longer in order to heighten your ecstasy. Alas, it's difficult to orchestrate both the best colour and longest duration.....often the brightest coloured displays are the shortest-lived, or maybe that's just the ennui of an old

man..... I should mention that the "change" you see is a bit deceptive: the change occurs less because of a full onset of red or yellow, but because of the decreasing production of chlorophyll. The colour (which was always there in bits but masked by chlorophyll) comes through also because of 'trapped' glucose and/or unneeded by-products of photosynthesis. Anyway, there are a few tips once we've distinguished between delaying the onset and lengthening the colour period. First of all, the tree needs to be healthy heading into autumn. Then, according to some Japanese sources, water is reduced. Initially I was skeptical when I heard this, since in the deciduous forests of the northern hemisphere a long hot dry summer almost certainly portends a shorter and less vibrant autumn colour scheme. But this is not irreconcilable: in autumn watering can and should be reduced, not to the point of a dry-out but as a nudge to the plant to signal the onset of dormancy. If you reduce a photosynthesis input (H₂O), the chlorophyll production will also reduce and the colours will show through more pronouncedly. While summer probably has you easing up on fertilizer (or at least on a low nitrogen diet), sufficient trace elements and 'happy' roots are needed to slow the urge towards dormancy (or at least make it less of a desperate sprint) and to 'produce' the colours you seek. My friend Tim recommends iron chelate (which is a by-product of the pet/plant friendly anti-snail pellets made by Maxi-Crop). A light Seasol bath at the end of summer can help. In early autumn, a bath in just rainwater can wash out remaining fertilizer, stimulating shutdown. Conversely, to delay colour onset, a fish tank light can be used to trick the tree from 'thinking' that the days are getting shorter. A lot also depends on physics as well as chemistry and it is certain that environment can play a larger role than diet at this point. Note that a tree with a less than optimal leaf reduction may turn quicker and (thanks to gravity) the leaves may drop sooner. Given this, you can defoliate in late summer and usually get some small green growth by early autumn. In a similar vein, protecting turning trees from frost (if you live in a frost prone areas), heat AND WIND swings and extremes will go a long way to adding to your autumn. Basically the rule of thumb is that the more you can control (=make gradual) the conditions which act as catalysts to dormancy, the more gradual (and thus longer) the process as the plant shuts down, moving its resources from food production to food storage. Another tip I have heard: Much like we can wrap pots in Hessian to protect them from the sun, we can also wrap them in early autumn and move the plant to a spot with the narrowest day vs. night temperature contrast to protect the roots against drastic cooling, a trigger for 'colouration'. I've heard of adding glycerin or food colouring to the water but I would NOT stuff around with that: the former is potentially toxic and the latter is just plain silly. I've also heard of adding hydrangea food to get some colours, but I'd have to see it to believe it (flower petals are not leaves). It's a good question. I admit I've never dwelt on the topic and am usually content to just enjoy what the tree offers up rather than orchestrate its beddy-bye time. Anybody out there have any tips for this?

Members may submit questions to Mr. Miyagi c/o the YVBS web forum or per the club email: info@yarravalleybonsai.org.au

“The Natives are Restless”



AUSBONSAI AUSTRALIAN NATIVE BONSAI AWARD 2010

One of AusBonsai's main aims is to increase awareness and use of Australian Native plants as bonsai. To assist this endeavor we will be holding an annual competition with the goal being to encourage and promote the use of our native flora as bonsai.

This year there will be 3 categories, 9 awards and prizes will be given as follows:

Category 1 - Best native bonsai

- 1st - Professional Grade set of Japanese made bonsai tools in a suede tool roll (\$350.00 RRP) and certificate
- 2nd - Pat Kennedy limited edition AusBonsai.com bonsai pot, Bonsai Focus magazine and certificate
- 3rd - Pat Kennedy limited edition AusBonsai.com bonsai pot and certificate

Category 2 - New stock awards (Stock must be less than 12 months in training)

- 1st - Custom made for your bonsai, a one of a kind Pat Kennedy bonsai pot and certificate
- 2nd - Bonsai Focus magazine and certificate
- 3rd - Certificate

Category 3 - Newcomer encouragement award (For bonsaists with less than 1 year experience)

- 1st - Pat Kennedy limited edition AusBonsai.com bonsai pot and certificate

- 2nd - Bonsai Focus magazine and certificate
- 3rd - Certificate

All Category 1 winners will feature in the AusBonsai.com header bar at the top of the forum over the coming year, will be showcased in an Australian Plants as Bonsai Study Group newsletter and will be seriously considered for display at the National Bonsai and Penjing Collection of Australia.

Review and Judging:

- Submissions will be reviewed by the Moderators of AusBonsai for compliance with the requirements
- Judging will be via an average point score and will be conducted by Roger Hnatiuk, Grant Bowie and Steven Hantos.
- Photography is not being judged however the best possible picture/s should be submitted. Review our section on photographing bonsai for tips.
- Point scoring will be based on the following three criteria:
 1. Horticultural and artistic features
 2. Design quality
 3. Total image and presentation

Final date for submitting entries will be **midnight on 31st March 2010**. Results will be published on AusBonsai.com by **7th April 2010**.



visit www.ausbonsai.com
for terms and conditions.



Vox Populi: “Yeah, I know our meetings start at 7pm with the Review/Overview Sessions.....blah....blah...blah. But I've yet to see it printed what time meetings actually END? What's up with that?”

Good point.... Trade and Library Tables pack up by 9.30pm at the latest..... If folks want to stay until or past 10pm, that's fine, particularly for workshop meetings....however be mindful of the possible early start the next day for the 'set-up/take-down' volunteers....maybe offer to take one of their places if things aren't wrapped up by 10pm. Oh, and the First Saturday of the Month Workshops at Japara House begin at 2pm and conclude roughly at 5pm.

Note/Invitation from the Canberra Bonsai Society:

Dear AABC Member Clubs: The Canberra Bonsai Society has a website cbs.org.au that contains a publicly accessible Wiki or Knowledge base. We have set this up to provide a place for the collection, discussion and enhancement of bonsai related info. The knowledge base can be accessed from the left hand menu on the home page of cbs.org.au (“Bonsai Knowledge Base”)

CBS Members have already placed a few articles on the knowledge base and will place additional ones that have been written over time for the perusal etc of all bonsai enthusiasts. The CBS invites other clubs and societies to share their articles in a similar fashion.

This will make it easier for members from other clubs to get access to different views and experiences that the sharing of club newsletters has provided in the past. In this way however, instead of sharing one newsletter around many members articles can be posted and available to any bonsai enthusiast anywhere.

Being a Wiki, the site is open to anybody on the internet from anywhere in the world to read, add content or comment. This means that contributing authors will need to be open minded and willing to see their contribution possibly evolve where the article attracts particular interest.

The articles can remain anonymous or can be associated with a club or (if a member wishes) they can identify themselves in the article. Remember however to respect others' privacy—they may not wish to be named.

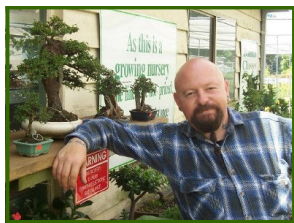
The self-explanatory in terms of how to use it. On the main page there are a number of pre-defined topic areas to help categorise articles or other content that might be added. The main page has a small help function that should get you started.

*“He who asks a question is a fool for a minute...
He who does not is a fool forever.”*
--- Chinese proverb

From the Bonsai Dictionary:

Leaf Pinching / le:f pín-çin / *noun* The act of stealing a leaf or bud off a display tree in the hope of propagating a similar tree. Can also be used when pocketing floor sweepings at workshops.



"Tim's Tips" Corner

There's been a bit of debate around pinching vs. cutting for conifers. Some prefer to just use scissors to trim whereas others will ONLY finger pinch. There's probably no absolute, but I'll just mention my advice and preference. First of all, the biggest thing is that when doing either, you take care not to bruise the foliage with the hand you are using to hold the branch steady. For example, if you are cutting with your right hand, be gentle with your left, otherwise the bruising and browning will take place much further down. This is particularly so for Shimpakus and Cypresses. Also if you are

pinching with your nails, you might as well use scissors. What you want to do is separate buds, so you don't need a big twist or anything. Just think of pulling some Lego apart and you get the idea: you should be doing more pulling than crushing. For the main burst of spring growth, you can cut, I guess, but I would still recommend pinching for the other less intense bursts of growth throughout the year.

On the subject of conifers, don't repot when you see the brand new light green bursts of growth. Also, try mixing your feeds throughout the year: seasoil for one feed, lifter for another, carp for a third, etc. This will accelerate growth compared to sticking to a single diet year-round. Lastly I'd advise against watering the foliage of pines and conifers, particularly in humid weather. I know the 'jet of water' approach to controlling mites can work, but just be sure to give the pads a shake and take care not to bruise foliage/needles. You can use a mix of 1 cup dish soap, 1 cup metho and 1 litre of water to make a mite agent... just spray from underneath and take care (with a towel over the pot) to get as little of that liquid mix as possible draining into the soil.

Tim Vivoda is the owner of A to Z Bonsai in Monbulk. His section appears in each newsletter.

**Quiz Question:****Answer: C.**

While there is no evidence that any of the other options were *never* used, the accepted history of the craft suggests that chips of broken pots were commonly used to screen drainage holes. (Also, option D would be a waste of perfectly good sake.)



BONSAI
BY SASHI-EDA
EST 1993

YVBS Newsletter 2.6 mentioned our 25% discount offer for members of bonsai clubs. A slight error was made in that this discount applies to members

of ANY bonsai club, not merely those in Victoria. The editor apologises for the error and for any hint of VIC-centric xenophobia.....

Tree Mini-Profile: Mugo Pine

The Mugo, Mountain, or Swiss Pine (*Pinus mugo*) can be a great tree to work with. Needles tend to be shorter than with Black Pines or Radiatas. Mugos are also more commonly found at general nurseries than are other pine species. However, check the graft spot..... Most mugos are destined for rockeries, so the graft



From www.artofbonsai.org



spot is not made with bonsai in mind. A sloppy grafting can leave you with a negative taper. Also inspect branches carefully: many mugo specimens have multiple main branches radiating from a bulbed bough....looking like something Dr. Seuss would dream up! As with all pines, they require an open (free-draining) soil and the roots are not very forgiving of being water-logged. Even once established, it's less sun/heat tolerant than Black Pines. Yet, in contrast to other pines, some sources report greater success in repotting Mugos in late summer, though don't bare root it. You needn't reduce the needle masses after a root pruning. Wiring is done in late summer to early autumn. To maintain full growth potential, use a slow release fertiliser or frequent light feeds with liquid organic fertiliser.

Kanji/Ideograms of the Month**BUN**

Meaning
scholarship,
culture, writing

JIN

person

These are the two ideograms or 'kanji' for the style we know as 'literati'. Different

interpretations exist for the etymology of this term and why it relates to that style.

One idea states that this style was popular among scholars perhaps because it took up less room on a writing table, and yet another theory simply

states that this style is evocative of ideograms

themselves in terms of lines, flow, artistry. Perhaps it is a combination of the two: the style might resonate with a scholar spending hours in writing or copying texts. or in perfecting the art of

SHODO.... The Japanese analogue of calligraphy. It is clear that many of the early scholars/monks of the Kamakura period (800 years ago) had been to China where PUNSAI there was a single tree style in which the tree was selected to depict hardship and the effects of weather, evoking reflections on life and philosophy: mainstays of the literati style.

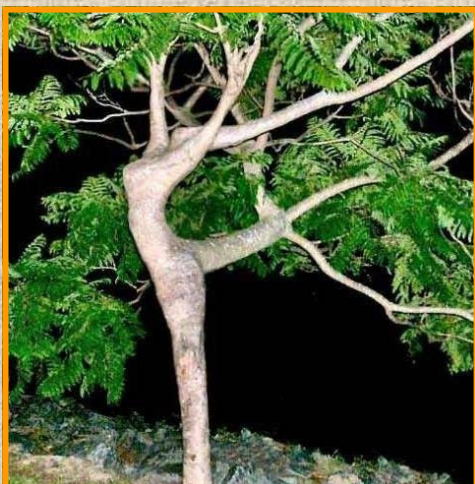
\$

Do any club members have a disk version of Quicken from the years 1999—2004?

If so, please let us know at the yarravalleybonsai@gmail.com address.

Thanks!

"FILL OUT THE PAGE WITH RANDOM STUFF" SECTION



So now you know:

Daily cost to have TV and stereo on 'standby' instead of turned off: 7.2 cents*

Daily cost of membership in the Yarra Valley Bonsai Society: 6.8 cents

Cost for electricity for two hours of TV: 6 cents*

Estimate of petrol cost to drive 1 kilometer: 5.6 cents

Cost of one single Malteser (from a 40g pack): 9.3 cents

*Sustainability Victoria



For the sake of transparency, the P&L (Profit and Loss) Statement for the 2009-2010 Tax Year will be posted on the FORUM in the Members' Section.

In case it was keeping you awake at night.....

ヤラ谷間盆栽会

YA RRA TANI MA BON SAI KAI
Yarra Valley Bonsai Society



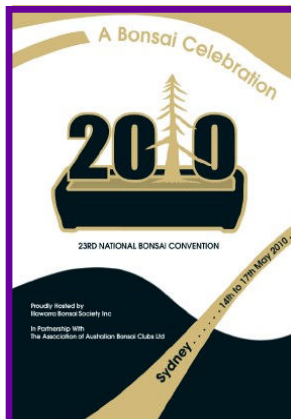
**Coming later
This Year:
Iron Chef Bonsai!**
"If memory serves...."



A reminder: Please don't park in front of the milkbar aside our monthly meeting venue. Thanks!

Winner of the January Forum Users Raffle: Sue H.

If you're not in the YVBS and would like to be added to our e-mailing list for newsletters, let us know c/o our gmail address: yarravalleybonsai@gmail.com



AABC National Convention

14-17 May 2010

Hosted by the Illawarra Bonsai Society

(venue Bankstown Sports Club/ Bankstown / Sydney / NSW)

<http://www.aabc ltd.org/conference>



Library Check-out!

A reminder that selected issues of Bonsai Focus are for review at meetings only and cannot be checked out. That said, we've decided to make hard copies of some of the key articles from Vol 1-30. While the library budget is basically used for FY 2009-2010, Ruth never stops looking for bargains! If there's something which she might keep an eye out for, let her know. (DVDs, texts on CD-ROM, especially.) Ruth estimates that a list of holdings, including recent contributions by Len Denelson, will be posted on the Forum soon.



Trade Table Cheque-out!

Wire was a BIG seller at the January and February meetings, and we'll soon be off to restock our holdings; so speak to Warren or any of the other committee members if there are specific items (except pots or training stock) we might source on behalf of members. We still have several pots donated by Geoff P as well as remainders from a large estate lot purchased by the club. Note that we have decided to discontinue the 'catalogue' option now that we have storage space and are in chats with traders regarding direct on-site sales of some items.



Yarra Valley Bonsai Society - Syllabus 2010

All meetings at the Mount Evelyn Presbyterian Church Hall/ 30-34 Birmingham Road, Mount Evelyn. Melway 118 A12

2010		Overview / Review (7:00PM - 7:30PM)	Main Event / Theme (7:30PM - 9:00PM)	Display / Style & Members Choice	Comments
Jan	12	Workshop on (not only) Natives		Natives "anything goes" & Members Choice	<u>NO</u> 1st Sat Workshop
Feb	9	"First & Recovery Aid" for the Stressed and Needy	Guest Presenter: Trevor McComb "BONSAI ART"	Figs "show-off" Roots & Memebbers Choice	www.bonsaiart.com.au
Mar	9	Tools Basics - selection, care etc. for "Novices" only - in separate room	Tools Advanced - sharpening etc. w ith Jeff Barry***	Juniper "Cascade / Semi cascade" & Members Choice	*** From Imagination Tree: www.sashieda.com.au
April	13	Styles: Cascade, Semi cascade & Windsw ept, Tw in Trunks & Literati	Guest Demonstrator: "Elms" w ith Trevor Wicks "WBG"	Autumn Colors "various styles" & Members Choice	"WBG" = Waverley Garden Club – Bonsai Group
May	11	Main Branch selection & Wiring Basics	Workshop "Driftw ood / Deadw ood" w ith Tim Vivoda "A - Z Bonsai"	"Informal Upright" & Members Choice	www.atozbonsai.com.au
June	8	"Wintercare" - w atering, fertilizer etc	AGM & "Trunk Splitting and using Raffia"	Shohin "various styles" & Members Choice	AGM/Elections & 0% Members SALE
July	13	Workshop on (not only) "Grafting" w ith Michael Simonetto		Conifers "various styles" & Members Choice	May require small payment for keeper stock for those wishing to do hands-on grafting.
Aug	10	Guest Demonstrator: Pines the "Classic Bonsai" w ith Quentin Valentine "BSV"		Nebari & Members Choice	"BSV" = Bonsai Society of Victoria
Sept	14	Pots - style, size & colour	Workshop - Root pruning / Repotting "your ow n trees" w ith Chris Sirre "Imagination Tree****"	Japanese Maples "various styles" & Members Choice	*** From Imagination Tree: www.sashieda.com.au
Oct	12	Pests and Threats - identifying, remedy & prevention	Guest Demonstrator: Lindsay Farr "BONSAI FARM"	Azaleas "anything goes" & Members Choice	www.bonsaifarm.tv
Nov	9	Air Layering & Cuttings	"Iron Chef Bonsai*" and Critique Intro	Deciduous "various styles" & Members Choice	*Teams craft, compete, and have fun a la SBS TV show!
Dec	14	Tips & Hints for the "Summer Survival" -placement, w atering etc.	Christmas Break-up & Round Table discussion / critique!	"On or In the Rocks" & Members Choice	Bring a Sw eet or Savory Dish!

Nursery Visits/Yamadori Trips (Destinations TBA)	Novice Course 7-9pm Japara House. Details/Tuition TBA	Intermediate Course 7-9pm Japara House. Details/Tuition TBA
17 April	4 May	22 June
24 April	18 May	29 June
17 July	25 May	6 July
14 August	1 June	20 July
28 August	15 June	27 July

ヤラ谷間盆栽会

January—
February 2010
Vol 3 No. 1

www.yarvalleybonsai.org.au

A group for all lovers of bonsai in the "far east" of Melbourne.....



Yarra Valley Bonsai Society
PO Box 345
Mount Evelyn, Victoria 3796
Australia

Looking Ahead to March and April:



The "First Saturday" workshops will meet on 6 March and 3 April at 2.00pm at Japara House/Montrose. As always, bring a tree or two for crafting/care work. Tea and Coffee provided. Note that the April workshop is indeed over Easter Weekend.

For regular monthly meetings, we'll have a review session on Tuesday 9 March for beginners on tools, their use and care in the back room of the church hall at 7pm. Continuing the theme, Jeff Barry of "Bonsai—The Imagination Tree" will present a session on more advanced aspects of bonsai tool usage and sharpening, commencing in the main hall after a short business section at 7.30pm. The club sharpening kit will be available (as it is at all monthly meetings) for use by members. The Display Table theme will be Junipers in Cascade and Semi-Cascade or Members' Choice.

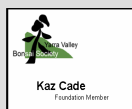
To place names with faces, we've developed a 'thumbnail sheet' with names, photos (if we have one on file) and any other info the member wants to include, such as forum username, or suburb of residence for possible car pooling. This document will not be in the open access of the forum; it will be visible only to other club members. So, proof your details on the hard-copy on the corkboard at the entry near sign-in. If you want to remain fully anonymous, that is your right.....as well as sending us a preferred photo/glamour shot in lieu of the one we've put on the proof sheet. Thanks!

At the end of March, our group has been asked to do a talk on bonsai basics at the Boronia Library (Saturday 27 March 10.30am). If there are any members who would like to assist with this, please speak to Bill at the March monthly meeting.

April sees at least three exhibitions amongst Victorian Bonsai Clubs, with Bendigo and Mornington Groups showing on Easter Weekend. Our monthly meeting in April will feature Trevor Wicks, from the Waverley Garden Club—Bonsai Group speaking on care and crafting of elms.

Accolades, Kudos, and Thanks..

- To Trevor McCombe, owner of Bonsai Art Nursery (www.bonsaiart.com.au), for a very well-received and thought-provoking talk/demo at our February meeting.
- To Rudi and Marlene, for a quite generous donation of over 30 items to the library.
- To Len Denelson for very generous contributions to our library.
- To Bonsai Society of Victoria and Bonsai Northwest for the friendly welcome extended to three of our officers during recent visits to the respective meetings in January and February.



Member Benefits Please refer to the website for a list of discounts received by members upon presentation of a current and valid YVBS Membership card. "Freebies" of donated items are also made available from time to time at monthly meetings.



BONSAI
BY SASHI-EDA
EST 1993

See our listing of short and multi-week courses for 2010/2011 at our website:

<http://www.sashieda.com.au>



New in Stock: Taxodiums (Swamp Cypress) with base diameter averaging 70-80mm. Most already busting with new growth. \$40 for YVBS members; a great advanced starter! Open every day 10am-4pm except Mondays.

www.atozbonsai.com.au

ADVERTISERS & SPONSORS:

Advertising on our website and/or newsletter is available for any registered business or sole trader. Society Sponsorship opportunities exist for any business in an area related to the craft of bonsai.

For details and advert/sponsorship prospectus contact Peter via the society's email: info@yarvalleybonsai.org.au