

# The Yarra Valley Bonsai Society Newsletter

## Highlights from July and August 2010



Two Masters Back-to Back! Quentin Valentine [L] and Michael Simonetto [R] provide great demonstrations at the July and August Meetings.



The YVBS meets on the **second Tuesday** of each month at the Mt. Evelyn Presbyterian Church Hall, 30-38 Birmingham Rd. Mt. Evelyn



Informal/ Review sessions begin at 7:00pm with a call to order at 7:30.

**Saturday Workshops** are 2-5pm on the first Saturday of the month. For September, our workshop will be at Bon-sai—The Imagination Tree. Check the website for details!

### Inside this issue:

July-Aug News con't	2
Quiz Question	2
Getting to Know You	3
Ask Mr. Miyagi	3
"The Natives Are Restless"	4
Tim's Tips	5
Tree Mini-Profile	5
Kanji of the Month	5
Featured Website	6
Fame and Fortune	6
Trade & Lib Update	6
The Dynamic Sifters	7
Inspiration and Per-spiration	7
Upcoming Events	8
Accolades, Kudos and Thanks	8

As was the case last winter, it seems when many of our trees are dormant we are anything but! The last two months or so have seen not only fantastic demonstrations at our monthly meetings but a flurry of extra-meeting activities for members of the Yarra Valley Bonsai Society. We've now met our 30 June membership target of +70 subscriptions and thanks to the involvement of so many members, our young club has truly progressed not only from crawling to walking, but probably even to running!

At the end of June and early July, several members attended various workshops with Japanese Master Hirotoishi Saito, sponsored by BFA Southern and the Bonsai Society of Victoria. While it will be (alas!) another two years before he returns to Victoria, the quiet and respectful mentoring by Mr. Saito will continue to ripple on for those fortunate enough to have attended his workshops and demonstrations.

The winter Novice and Intermediate Classes with Craig Wilson have wrapped up. While there is still a chance of running a second section of each course later in spring, the sign-ups point to insufficient numbers for full courses, and as these are run only to cover costs, a break-even enrolment number is set. Should courses not go ahead, we'll look at a possible schedule of workshop tutorials as was done last spring. The September monthly meeting will be the last opportunity to sign up; after this, a "go-no go" decision will be made.

Our first Pottery Course with Jo Maggs has been not only popular but a forum for some pretty amazing work by the 12



**BONSAI**  
BY SASHI-EDA  
EST 1993

**Bonsai Open Day  
September 4**

Bonsai Demonstrations, Ikebana, Taiko Drumming, Bonsai Clinic, Pat Kennedy and his pots,

Brian Sampson Demo....and more! All coinciding with Garden Lovers' Huge Father's Day Sale.

136 York Road / Mount Evelyn, VIC 3796

(Melway Ref 120 D1)

<http://www.sasheda.com.au>

### Calendar Dates:

- September: "First Saturday YVBS Workshop. 2-5pm.
- 11-12 September [SAT-SUN] Australian Natives Plant Show, Eltham Community & Reception Centre; 801 Main St. Eltham;
- 14 September: [TUES] YVBS Monthly Meeting: Pot selection and Potting with Chris Sirre.
- 18 September [SAT]: Nursery Crawl Part IV— The Deep South.
- 2 October [SAT]: "First Saturday YVBS Workshop. 2-5pm.
- 9-10 October [SAT-SUN] Bonsai Society of Victoria Spring Show. Box Hill Town Hall.
- 12 October: [TUES] YVBS Monthly Meeting; IRON CHEF BONSAI!
- 16 October [SAT]: Northern Sub-urbs Bonsai Club Show. Lalor Library, Lalor.
- 16-17 October [SAT/SUN] Bonsai Society of Southern Tasmania Show.
- 26 Oct [TUES]- YVBS Committee of Management Meeting. 7.30pm.
- 30-31 Oct. [Sat./Sun] Geelong Bonsai Show. 10am-4.30pm Geelong Masonic Centre, Regent Street, Geelong.

See also the Events Calendar on our website: [www.yarravalleybonsai.org.au](http://www.yarravalleybonsai.org.au)

## July—August Highlights Con't from page 1

members participating. They have been encouraged to display the fruits of their labour at the September Meeting on the Display Table. As with Craig's courses, if there is sufficient interest, we'll offer another section of this course starting in late September or early October.

At the monthly meetings in July and August, we were fortunate to have Michael Simonetto present on grafting techniques and Quentine Valentine (with the assistance of John M) demonstrate crafting and restyling of pines. These are three of the top bonsai artisans in Victoria and we are VERY appreciative of their willingness to drive out to the "Far East" to share their knowledge and skill.

Michael returned to us in August to conduct a grafting workshop with several members one Saturday in August. We are please to report that no fingers were lost during this workshop.

As if that weren't enough to keep us busy, the third of four Nursery Crawls for 2010 was conducted in August. This one, entitled *Home Stomping Ground* (cleverly wordsmithed by Rudi and renamed "Home Stumping Ground") included visits to Bonsai the Imagination Tree, A to Z Bonsai, Paddy's Plants, and Gentiana. Thanks to the owners of those nurseries who welcomed us.

A short five-hour course at Japara House was conducted by two members (the Will and Bill Show); the students included two of our club's newest members, with two participants joining later.

A reminder that as of the July meeting the membership unanimously voted to have 9.30pm as the formal meeting end time. This should still allow plenty of time for library and trade table activity either during the Review/Overview session from 7-7.30pm or following the main featured event.

In July and August, the Committee of Management produced a membership Survey form. Mike has crunched the data from those returned and the Committee rolled up their sleeves in August to begin pruning the syllabus for 2011. In particular, we'll be examining the optimal balance between workshops, talks, and demonstrations at our monthly meetings, possible venue shifts, and ways to make the FORUM more useful to members. We also had a number of members step forward to volunteer to serve on the SHOW Committee. As you know, our second show is slated for April 2011— if you weren't able to fill out a survey form, there will be ample opportunity to assist in preparing for the 2011 Show. Thanks to all members who took the time to fill out this form!

Lastly, but not leastly [!] we welcome our first two formal sponsors, "Bonsai—The Imagination Tree" in Mount Evelyn, and "Orient Bonsai Nursery" in Reservoir. See their ads on the first and last pages of this newsletter. We thank them for their generous support and trust they will find sponsorship of our club mutually beneficial.



Participants at the Society's Pottery Class.



Wrapping Up the Intermediate Course.



Close Up at the Grafting Workshop.

Japanese Master Hirotoishi Saito provides shaping advice with members from clubs across Victoria at the BFA-sponsored **Bonsai in Ballarat** Gathering.



## Course Update for 2010

The club MAY sponsor a second section of each of the Novice and Intermediate Classes and the Pottery Course in early spring if there's sufficient interest. A sign-up sheet was posted at the July meeting. A decision will be made after the September meeting, so let us know ASAP if you're interested.



## QUIZ QUESTION:

(Answer— page 6)

Which of the following is the usual shape of the blade of a grafting knife? (...looking from the tip of the blade [front] to the back.)

A.

B.

C.

D.



From the *Bonsai Dictionary*: **Hard prune**. *ha:rd proun* /noun, adj./  
The state, texture, or characteristic of hands after continued glove-less trimming of roots, soil mixing, seasoil-soaking, cold muck preparation, and repotting. Usage: "Shaking his hand early last spring, from that *hard prune* feel of digits and palm, I knew at once that the gentleman must have been a bonsai enthusiast."





## Getting to Know You...

**Lorraine P:** {left} "I'm married to Rob (who is also in our club) and we have four adult children, and eleven grandchildren. Needless to say, child minding keeps us busy most days. I've always enjoyed gardening, and became interested in Bonsai when we were living in Shepparton some 15 years ago. I've worked in Aged Care; although I'm now retired I still stay involved with volunteer work in that field. Another interest of mine is attending local amateur theatre groups."

**Alison V:** {right} "I spent my childhood & teenage years in the southern Riverina region of NSW & North East Victoria. As a primary school child I attended a small bush school & experienced drought & dust storms similar to those endured in recent times. Later living in NE Victoria the seasons changed & the rains returned with a vengeance. So naturally I'm interested in the environment & our interaction with nature. Involvement with Community Aid Abroad (now Oxfam) afforded me the opportunity to travel to Asia & East Africa and observe subsistence level farming methods. Along with three friends, I now have a fairly large "veggie plot" & we have varying degrees of success, but many a good laugh as we battle the elements, & wildlife. Since retiring six years ago, I've had time to enjoy spending time with family, reading (historical novels, thrillers, sci-fi), varied crafts, & volunteer work at the Lilydale Athenaeum Theatre. Like/Dislike:- Love wandering around nurseries, but have an aversion to large shopping centres, in fact shopping in general. Guilty Confession: I've been a Collingwood supporter for 55 years."

*(editor's note: Although Alison is a Magpie supporter [despite having no tattoos of which we are aware], she is a lovely person and in no way should this fact be held against her.....the YVBS welcomes people with ANY manner of disability.)*

*In each newsletter, we profile a member or two as a means of getting to know each other better. In that spirit, and as our group continues to grow, members are reminded to bring their nametag/membership cards to meetings*

## Ask Mr. Miyagi.....



**Q:** I've heard a broad array of opinion regarding the repotting of deciduous trees. Some people do this in very late autumn whereas others will wait until the first breath of spring to root prune and repot. What's the correct option?

**A:** Are you trying to tell me that there's actually a difference of opinion among bonsai enthusiasts, Daniel-san? My experience is that for every ten people you ask on a topic, you get on average 14.27 opinions! Timing for root pruning and potting is no different. People who do this early often mention that roots start to move in the spring long before anything happens above the surface. In the other camp are people who say that an early

prune in late autumn/early winter can make a tree more susceptible to root rot. Personally, I think they are both right....but neither is an absolute. A lot depends on the species as well. I've found oaks to be very prone to root rot. Beeches don't like their roots mucked around with much at all, whereas many elms take it all in stride. Indeed azaleas even benefit from a post-flowering root prune. And I'm probably already too late for most prunus species.

I think the key is to make sure the soil in a repotted environment is not OVER-watered. Moist soil is good...soaking wet or water-logged soil is an invitation to disaster. If there's sufficient drainage, most trees will heal. Some folks like to use wound sealant and/or rooting powder on large root cuts.... I usually can't be bothered with either. Another factor in pruning late is that a lot of energy is stored in the roots and trunk so once the buds swell you are not pruning off energy-laden roots as much....or so the theory goes. On the other hand, some prune early, mindful that trees should NOT be fertilized for at least 4-6 weeks after repotting. (Seasol-type conditioners & tonics only!) Part of the timing also has to do with how heavy you will prune the roots. A VERY radical prune of heavy roots could wait until later but a lighter trim can happen in late autumn with usually no dramas. Personally I think that more important than timing is the need to have the tree secure in its new soil medium. Even just a light breeze can move a tree enough to stifle or rip new fibrous roots. Some would (and do!) argue the point but I would snugly wire in 95% of repotted trees.

*Members may submit questions to Mr. Miyagi c/o the YVBS web forum or per the club email: [info@yarravalleybonsai.org.au](mailto:info@yarravalleybonsai.org.au)*

## “The Natives are Restless”

All photos c/o the Australian National Botanic Gardens website: see p. 6 and p. 7

Tristanopsis laurina Water gum



Callistemon Bottle Brush



Ficus sp. Fig



Ficus rubiginosa  
Port Jackson fig



Leptospermum laevigatum  
Coast Tea-tree



Banksia integrifolia



Leptospermum morrisonii

Editor's whim: I would love to have a member or two offer to take over this section! I know even less about natives than exotics! Without contributions, this section will terminate in the next few newsletters.....



**New in Stock:** We're almost finished bringing in our newly dug and potted ground stock from our source fields. The picture here is just a sample of some of the items. We've got some pretty large elms and pines now at impossible to beat prices. We're open every day 10am-4pm except Mondays. Remember: YVBS members receive a discount on cash sales to a mere 10% above our wholesale price!



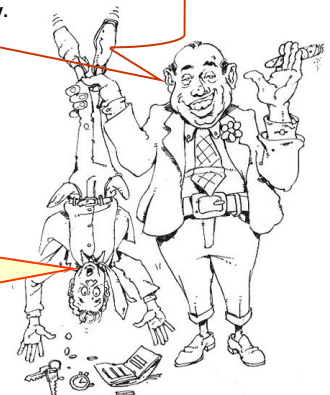
### Update from the Shirt Stirrers:

With so many new members, we'll be doing a second run on polo shirts, caps, and T-shirts beginning in late spring. There are still a few on the trade table, however, for those who can't wait...

Same rates as last year and the year before: \$25/single, \$35 family.

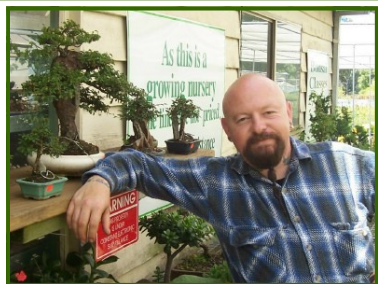
**Last (polite) call for Membership Renewals!**

Don't forget that all memberships were due for renewal on 1 July, regardless of the date you joined.



*The tree which moves some to tears of joy is in the eyes of others only a green thing that stands in the way. Some see Nature all ridicule and deformity, and some scarce see Nature at all. But to the eyes of the man of imagination, Nature is Imagination itself.*  
- William Blake, 1799, The Letters





## “Tim’s Tips” Corner

You’ll recall that in the last newsletter we looked at sowing seeds. What I hoped you’d get from that is that all you are doing is imitating, and perhaps accelerating, processes of nature which existed for a long time before we showed up: stratification mimics winter, scarification mimics seeds being bashed by the elements or digestion by an animal, etc. In the last issue we looked at seeds from deciduous species.

Now to some other categories: As far as pines go, many of the assumptions are still the same. When searching for ready cones, look for the birds. As with seeds of deciduous trees, don’t pick cones off the trees (even if you can reach them that is). They usually fall when they are ready, but you can cheat by giving the branch a slight shake. Cones can be put in a cardboard box in a warm place to absorb moisture. The cone is the pine seed incubator.... When it opens, this is an indication the seeds no longer require incubation. So if you gather ‘closed cones’ they will have to dry a bit and seed harvest is only possible after they open. In an open cone, you’ll note that the underside of each ‘flap’ usually contains two seeds. These seeds are located along a center axis of each flap, close to the cone’s stem core. Note that the seeds closer to the base of the cone tend to be more viable. The ‘float or sink’ method of determining viability still works but only if you use the seed only.... The whole wing from a cone will float, regardless of the viability of the seed. So take seeds out from the underside of each cone flap.

Once dried a bit, they can be put into a cold area for a few weeks before being put into your growing medium. The same depth rule applies for cultivation of pine seed... only sow as far down into the soil as the diameter of the seed.

I’m not as experienced at cultivating natives from seed other than figs. However, I’ve heard that if you hold native seeds in a metal sieve, passing it over the smoke from burning gum leaves, this will aid in germination.

Growing from seed takes more time and patience obviously, but there are positive benefits from maintaining a genetic diversity in an area dominated by cuttings and airlayers. Seed can be obtained by gathering, from seed banks around the country, from distributors, even eBay these days.

Just a reminder for those digging pines, if the candles are moving, don’t bother digging them...it’ll be a lot of effort at the highest-risk time of year.

*Tim Vivoda is the owner of A to Z Bonsai in Monbulk. His section appears in each newsletter.*



## Tree Mini-Profile:

### Olive



Olives have become so widespread in the wild in certain parts of Australia that they have become almost “honorary natives”. As a favorite and convenient ‘yamadori’ target, olives survive being dug from the ground quite well. Indeed some collectors are able simply to lop off a tree at ground level and get new root shoots. Olives can make fantastic bonsai, especially as they are heat and drought tolerant relative to other species. They love full sun. As far as feeding, dynamic lifter and blood & bone can be used but should be restricted in winter. A bit of dolomite lime is great for jumpstarting growth. All styles (with perhaps the exception of ‘broom’) are possible with this versatile tree. Although quite hardy, olives are especially prone to scale infestation. These trees are prized for the beauty of the aged wood. However, care **MUST** be taken when carving olive wood with a grinder or dremel tool as the sawdust can be toxic [treat it like you would when cutting treated pine].

## Kanji/Ideograms of the Month

男

man:

When mention of gender is meant rather than simply ‘person’ this kanji is often used. You’ll recall from the last newsletter [3.3] the mention of radicals.... This kanji has two radicals: **field** placed above **strength**. As a standalone, this is pronounced as **otoko**, and in many compound words as “**nan**.”

女

woman:

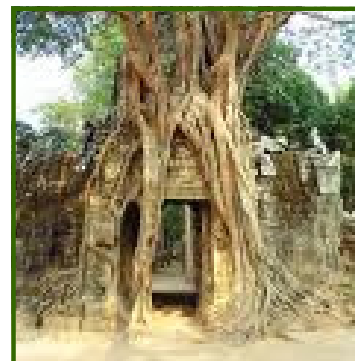
This is the kanji for woman, with a standalone pronunciation of ‘**onna**’. The depiction is of a person kneeling or with arms crossed.... Depending on being either subservient or hard to please.....

子

This standalone kanji (and radical) represents ‘**child**’

While I won’t go into to the lore about ‘disharmony’ or ‘conflict’ being represented by two women under one roof, it is interesting that the kanji root of “**to like**” is comprised of the radicals for woman and child.

好



## FAME, FORTUNE AND GLORY SECTION (and any other announcements)

### It's a new season with plenty of new things to do.

Welcome to another Good Life Guide from Pura Light Start. Just like our milk, it's all about bringing you the good stuff. And now winter's officially here, there are plenty of things to keep you busy. Whether it's the Light in Winter Festival at Fed Square, a fishing trip to Cape Schank or a training session in preparation for Run Melbourne. And if you're after more gentle pleasures, learn the art of bonsai or uncover the secret history of coffee in Melbourne. It's our first winter weekend so wrap up warm and taste the good life.

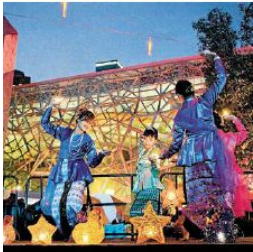


**My pick of the weekend.**  
*Joey Estlin*  
**Coffee pronto.**  
Coffee is as ingrained in our culture as barbecues and football. Take a closer look with Maria Paoli on an Evolving Success Sensory Espresso Experience. Celebrating the contributions of our early migrants in developing the espresso industry, master the art of a perfect extraction. Touring tomorrow. Contact maria@evolvingsuccess.com.au  
evolvingsuccess.com.au

YVBS members Rudi, Callum, and Ray (and Gwenda hiding behind the tree) all had cameo appearances in a Pura Milk advert feature from The Age back in June.

### Shed light on winter gloom.

Bursting from winter's darkness and casting a warm glow over Melbourne's grey skies, the Light in Winter Festival will add a little light to your life. Federation Square will be your beacon of light with a month-long series of light-based artwork, a mid-winter solstice celebration, community events and forums with leading illumination and digital artists. Explore ideas of light, enlightenment and hope this winter. Until July 4.  
fedsquare.com

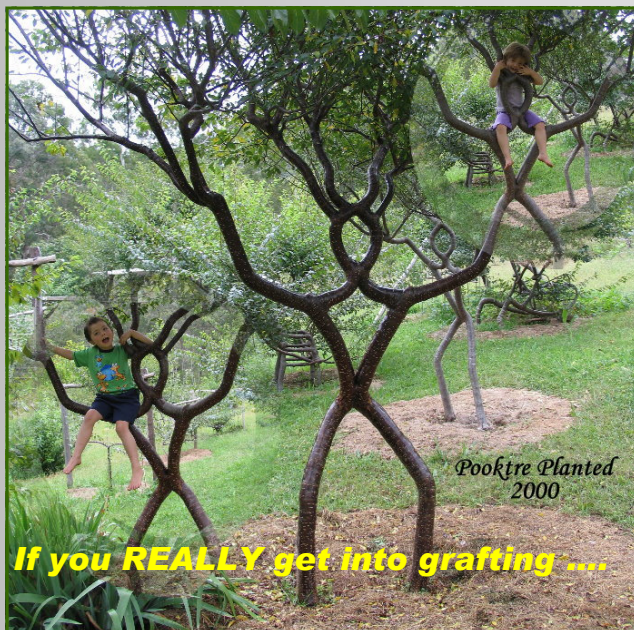


### Bonza bonsai.

Bonsai, or the art of cultivating small trees, is not just about reflection and contemplation. It can be a technically demanding hobby with mental and physical exertion going into cultivating a living and growing work of art. A very rewarding pursuit for all ages. The Yarra Valley Bonsai Society, and many other bonsai clubs across Victoria, offer workshops, nursery crawls and courses for novices and advanced artisans alike.  
yarravalleybonsai.org.au



A reminder: Please don't park in front of the milk-bar aside our monthly meeting venue. Thanks!



**Coming in October Iron Chef Bonsai!**

"If memory serves...." See p.8



We're looking at several options for digs within the next month and a half. Most likely we'll opt for a local hike along the Warburton Trail or Mt. Evelyn Aqueduct Trail.... Stay tuned for details.....

### Quiz Question:

The answer is "B."

When cutting into the 'host' wood in a graft, the flat side is towards the core of the branch, root stock



### Website Of the Month:

Australian Native Plants as Bonsai

<http://www.anbg.gov.au/bonsai>

A great archive of photos of native species in a variety of bonsai styles.



### Library Check-out!

Ruth has compiled a list of current library holdings. This has been placed on the FORUM in the Library Folder of the Club Members' Section. Many thanks to Ruth and Andrea, who diligently unpack all books, track our holdings, and pack up again, month after month. The library's a big hit with club members...in large part thanks to your hard work, ladies!



### Trade Table Cheque-out!

Warren reports that some new items have arrived, including some CreanMate blocks for cleaning tools, cut paste, sickles for extracting trees from pots, and newly arrived raffia. There's still plenty of wire in sizes up to 8mm and a selection of tools. Also: tool pouches, a few YVBS T-shirts, pot-hole mesh, & the last of the pots. Don't forget the club's tool sharpening kit, available for use at meetings.





### Bonsai Forum Review (aka: "The Dynamic Sifters" or "Thread Grafts")

\*by JS & TJ

If you're like me you'll love a good bonsai gallery. The beauty of researching the art of bonsai on the internet, aside from the great deal of knowledge you can glean, is that you'll discover many professional and non professional galleries that will inspire you in times of bonsai despair. I often spend more time staring at galleries than conversing with other enthusiasts on the forums, though each has its benefits.

One of my favourite galleries in particular is at 'The Art of Bonsai Project' [www.artofbonsai.org](http://www.artofbonsai.org) featuring trees from people around the globe like Keiichi Fugikawa, William Valavanis and Min Hsuan Lo. This site also has a number of excellent articles from numerous artists plus a selection of interviews; it's a terrific resource in general for both the bonsai grommet and the pro. Another good one is the Australian Native Plants as Bonsai Exhibition galleries, <http://www.anbg.gov.au/bonsai/index.html>, featuring a wide selection of natives in all sorts of styles for the native bonsai enthusiast. It's compiled from trees shown at a yearly exhibition in Canberra from 05 to 08, but sadly the updates seemed to have stopped since the opening of the national collection. (See p. 7 and website of the month....)

But I would have to say that currently the crown for best gallery goes to Walter Pall (if I'm mistaken please let me know!) [www.walter-pall.de](http://www.walter-pall.de) whose site showcases a huge number of his trees, both with and without their "clothes". Here you can see his conifers and "informal broom" deciduous in a myriad of settings and seasons. (see the barny he started on "informal brooms" at <http://ibonsaiclub.forumotion.com/bonsai-f1/clean-sweep-show-us-your-brooms-t2285-0.htm>). Walter not only provides us with a stunning gallery of his many creations but he also keeps a regular blog of all things 'Pallai' [www.walter-pall-bonsai.blogspot.com](http://www.walter-pall-bonsai.blogspot.com). Here you can see him do everything from attacking raw material to daily care. If only more artists of Walter's caliber would get techno savvy, the novice would have so much more to draw on.

I'm looking in your direction, Kimura!



A message from our partners:

*Cheers to a Good Cause....*

*Goodwill Wine is proud to support The Yarra Valley Bonsai Society.*

*As a business made possible through the goodwill of others, our aim is to reward people for supporting good causes. We do this by sourcing quality*

*wine and passing on 50% of our profit to the community organisation of our customer's choice. Now you can support your cause by visiting us online at:*

<http://www.goodwillwine.com.au/>

OK.... You may think it's a bit pretentious for our club to have its own wine label, but it's a great fundraiser for a good cause: namely our club! Seriously though, the folks at Goodwill Wine have put together a great package for us, allowing us some gifts for our valued outside demonstrators now that our T-Shirts and caps have run out! If you are in a club or non-profit that would benefit in a similar way, by all means check them out!

or if you'd like to buy a case\* of Yarra Valley Bonsai Society Wine (which can be picked up locally north of Lilydale), see <http://www.goodwillwine.com.au>

[/charities/yarra-valley-bonsai-society](http://www.charities/yarra-valley-bonsai-society)

\*If you don't drink as much as certain folks on the Committee of Management :-), find someone in the club and go halves!

### Inspiration and Perspiration: Short Ideas from Members



Here's an idea that we've tried a few times..... When root pruning something we've dug up from the ground I've often worried that if it's advanced stock (and depending on tree) then most of the feeder roots will be way out on the ends of roots that are far too long for a polybox. What I've done is to cut a long root halfway through, bend it back into a more cooperative position, wet the break area and then sprinkle some rooting powder over it. That way you get new feeder roots more quickly from the fracture area, but the feeder roots already existing further down from the fracture continue to assist the tree in getting over the shock of transplant. Can't say it's based on anything other than experience.....

Members: Start thinking of what your own idea might be.... Some- **THE EDITOR**  
thing you stumbled upon by trial and error, something you read, once saw at a nursery.... The newsletter editor will be tapping YOU on the shoulder.



# ヤラ谷間盆栽会

July –August  
2010  
Vol. 3 No. 4

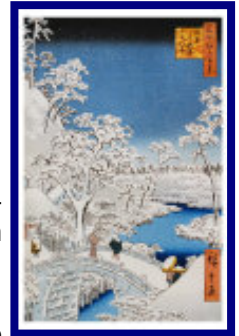
[www.yarrawalleybonsai.org.au](http://www.yarrawalleybonsai.org.au)

*A group for all lovers of bonsai in the "far east" of Melbourne.....*



**Yarra Valley Bonsai Society**  
PO Box 345  
Mount Evelyn, Victoria 3796  
Australia

## *Looking Ahead to September & October*



On 18<sup>th</sup> September, we'll conduct the 4th and last (for this year) in the series of our club-organised Nursery Crawls. **"The Deep South Tour"** will cover spots in the Mornington Peninsula area, including a visit to a fantastic pottery. Details conveyed at the Sept. meeting.



Don't forget that our September **Saturday Workshop** will be held at "Bonsai—The Imagination Tree" in conjunction with their **Bonsai Open Day** on Saturday 4 September. A program with the other featured events for the day has been posted in the sponsors section of the FORUM and emailed to members.



With hardly a chance to catch his breath after the above, Chris Sirre will be the featured highlight at the **September monthly meeting**, speaking on aspects of repotting. This will be an active workshop demo, so members are DEFINITELY encouraged to bring in their own trees for repotting. The Review/Overview session (7.00pm) for the 14 September meeting will look at pot style, colour, and selection. The Display Table theme will be Japanese Maples in various styles, or [as always] Members' Choice.



OK...so we've been spruiking **"Iron Chef Bonsai"** for several months now. What is it? Basically it'll be a fun evening for all members... a mock up of the popular Iron Chef show as seen on SBS. (See <http://www.youtube.com/watch?v=Dd4f7hR3F7s&feature=fvst>) "Chairman Kaga" (after the obligatory campy bite of a capsicum) will unveil the secret ingredient [tree species] and all members attending who wish to participate will work in teams of three crafting and potting a tree against a panel of resident Chefs: [Iron Chef Slanting, Iron Chef Informal Upright, etc.]. After 60 minutes, the resulting trees will be critiqued by a panel of judges, a 'winner' or 'winners' declared, laud and honour heaped upon said winning team or teams, and the resulting trees will go home with the highest bidders in a silent auction.....or something like that. As this will be VERY hands on, bring your tools and wire! To properly plan for the event and source sufficient stock, we will ask in September for a confirmation of participation. Display Table: Azaleas or Members' Choice.

## **Accolades, Kudos, and Thanks..**

- To Quentin Valentine for an extremely informative session on pine styling at the August Monthly meeting; (And to John M. who came along to assist!)
- To Michael Simonetto for the Grafting demo in July and for conducting a grafting workshop with members on 14 August;
- To Imagination Tree and Orient Bonsai Nursery for becoming formal sponsors of YVBS;
- To the local nurseries (Gentiana, Paddy's Plants, A to Z Bonsai, and Imagination Tree) who received members during our latest Nursery Crawl;
- To "A to Z" for discounts on stock and donated shears for the Beginner Short Course.



**Member Benefits** Refer to the website for a list of discounts to members upon presentation of a current & valid YVBS Membership card. "Freebies" of donated items are also made available from time to time at monthly meetings.

[www.orientbonsai.com.au](http://www.orientbonsai.com.au)



**WONDERFUL BONSAI**

盆栽



**ORIENT  
BONSAI NURSERY**  
BONSAI 東方花卉盆景藝術公司



**Closed Tuesdays.**

## **ADVERTISERS & SPONSORS:**

Advertising on our website and/or in the newsletter is available for any registered business or sole trader. Society Sponsorship opportunities exist for any business in an area related to the craft of bonsai.

For a prospectus or further information contact Rudi via the society's external email: [info@yarrawalleybonsai.org.au](mailto:info@yarrawalleybonsai.org.au)